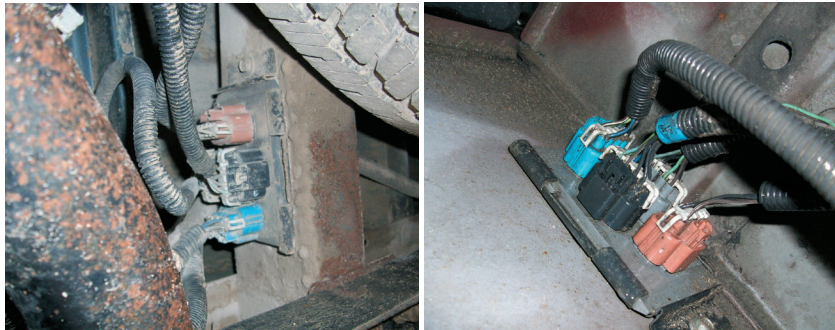


## #9523132



(Figure 1)

(Figure 2)

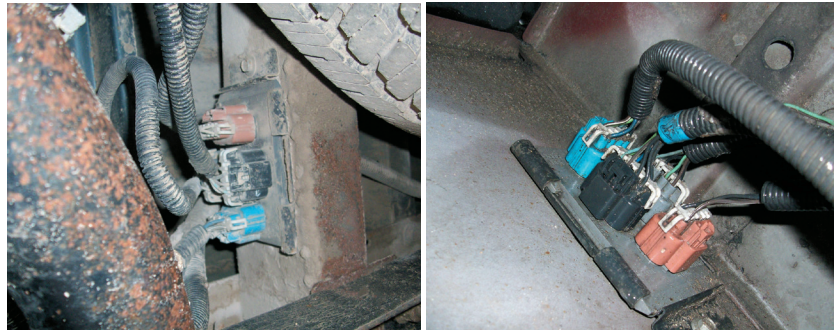
1. Locate the junction box under the vehicle. Driver side junction box is adjacent to the spare tire on the frame (Figure 1). Passenger side junction box is on rear inside fender (Figure 2).
2. Disconnect the BLUE connector from junction box. Plug the Hopkins® wiring kit end into junction box and disconnected BLUE connector harness.
3. Clean an area nearby junction box and mount the converter box using double stick tape provided.
4. Secure all loose wiring to vehicle with ny-ties.
5. Route 4-way flat harness towards the front of the vehicle. Secure wire to vehicle with ny-ties.
6. Install 4-Flat end of harness (from rear of vehicle) into 4-way flat bracket.
7. Mount the 4-way flat bracket using screws provided in a convenient location at the front of the vehicle.
8. Locate a suitable grounding point near the connector. (Do not drill into vehicle floor or bed.) Clean dirt, paint and rust proofing from area. Drill a 3/32" hole and secure white wire with ring terminal using screw provided. Do not drill into any exposed surfaces.
9. Apply a small amount of grease (provided) to the 4-way flat terminals to prevent corrosion.
10. Connect to RV electrical system and test all functions with the engine running to ensure proper operation.

**TIP:**

Grease applied to the wiring terminals on a regular basis will help prevent corrosion.

311-0288-380

## #9523132



(Figure 1)

(Figure 2)

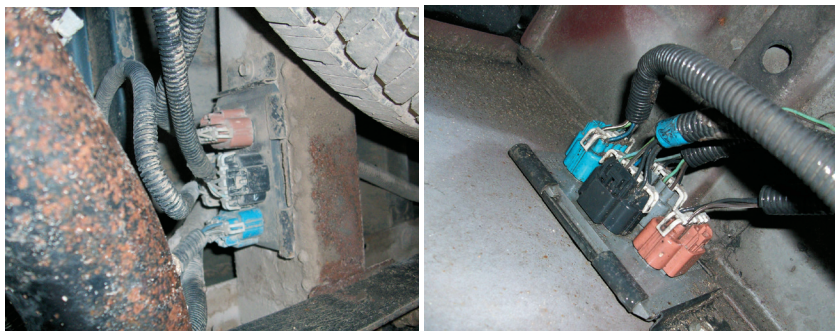
1. Locate the junction box under the vehicle. Driver side junction box is adjacent to the spare tire on the frame (Figure 1). Passenger side junction box is on rear inside fender (Figure 2).
2. Disconnect the BLUE connector from junction box. Plug the Hopkins® wiring kit end into junction box and disconnected BLUE connector harness.
3. Clean an area nearby junction box and mount the converter box using double stick tape provided.
4. Secure all loose wiring to vehicle with ny-ties.
5. Route 4-way flat harness towards the front of the vehicle. Secure wire to vehicle with ny-ties.
6. Install 4-Flat end of harness (from rear of vehicle) into 4-way flat bracket.
7. Mount the 4-way flat bracket using screws provided in a convenient location at the front of the vehicle.
8. Locate a suitable grounding point near the connector. (Do not drill into vehicle floor or bed.) Clean dirt, paint and rust proofing from area. Drill a 3/32" hole and secure white wire with ring terminal using screw provided. Do not drill into any exposed surfaces.
9. Apply a small amount of grease (provided) to the 4-way flat terminals to prevent corrosion.
10. Connect to RV electrical system and test all functions with the engine running to ensure proper operation.

**TIP:**

Grease applied to the wiring terminals on a regular basis will help prevent corrosion.

311-0288-380

## #9523132



(Figure 1)

(Figure 2)

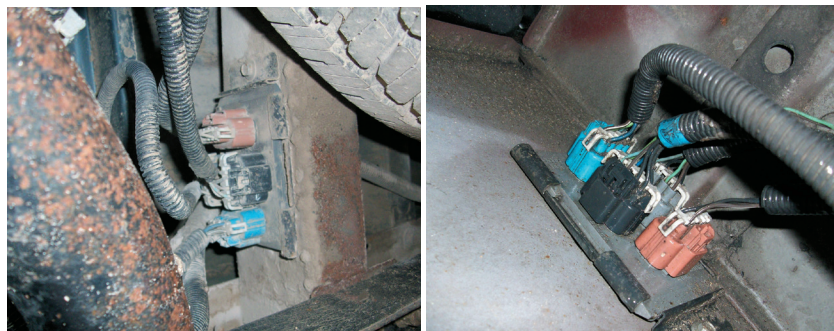
1. Locate the junction box under the vehicle. Driver side junction box is adjacent to the spare tire on the frame (Figure 1). Passenger side junction box is on rear inside fender (Figure 2).
2. Disconnect the BLUE connector from junction box. Plug the Hopkins® wiring kit end into junction box and disconnected BLUE connector harness.
3. Clean an area nearby junction box and mount the converter box using double stick tape provided.
4. Secure all loose wiring to vehicle with ny-ties.
5. Route 4-way flat harness towards the front of the vehicle. Secure wire to vehicle with ny-ties.
6. Install 4-Flat end of harness (from rear of vehicle) into 4-way flat bracket.
7. Mount the 4-way flat bracket using screws provided in a convenient location at the front of the vehicle.
8. Locate a suitable grounding point near the connector. (Do not drill into vehicle floor or bed.) Clean dirt, paint and rust proofing from area. Drill a 3/32" hole and secure white wire with ring terminal using screw provided. Do not drill into any exposed surfaces.
9. Apply a small amount of grease (provided) to the 4-way flat terminals to prevent corrosion.
10. Connect to RV electrical system and test all functions with the engine running to ensure proper operation.

**TIP:**

Grease applied to the wiring terminals on a regular basis will help prevent corrosion.

311-0288-380

## #9523132



(Figure 1)

(Figure 2)

1. Locate the junction box under the vehicle. Driver side junction box is adjacent to the spare tire on the frame (Figure 1). Passenger side junction box is on rear inside fender (Figure 2).
2. Disconnect the BLUE connector from junction box. Plug the Hopkins® wiring kit end into junction box and disconnected BLUE connector harness.
3. Clean an area nearby junction box and mount the converter box using double stick tape provided.
4. Secure all loose wiring to vehicle with ny-ties.
5. Route 4-way flat harness towards the front of the vehicle. Secure wire to vehicle with ny-ties.
6. Install 4-Flat end of harness (from rear of vehicle) into 4-way flat bracket.
7. Mount the 4-way flat bracket using screws provided in a convenient location at the front of the vehicle.
8. Locate a suitable grounding point near the connector. (Do not drill into vehicle floor or bed.) Clean dirt, paint and rust proofing from area. Drill a 3/32" hole and secure white wire with ring terminal using screw provided. Do not drill into any exposed surfaces.
9. Apply a small amount of grease (provided) to the 4-way flat terminals to prevent corrosion.
10. Connect to RV electrical system and test all functions with the engine running to ensure proper operation.

**TIP:**

Grease applied to the wiring terminals on a regular basis will help prevent corrosion.

311-0288-380