



Demco

Kwik-Tow TOW BAR



ASSEMBLY
CALIBRATION
OPERATION
REPLACEMENT PARTS

READ *complete manual CAREFULLY
BEFORE attempting operation.*

Doing Our Best to Provide You the Best

OPERATORS MANUAL

⚠ WARNING: Exceeding weight limitations or not using a towing vehicle larger and heavier than the tow bar and the towed vehicle combined can result in loss of towing vehicle control, separation of the tow bar from the towing vehicle, or separation of the towed vehicle from the tow bar, causing severe personal injury, death, and/or property damage.

INDEX

Safety Symbol and words.....	3
Safety You Can Live With.....	4-7
Safety Sign Locations.....	8
Weight Limitations.....	8
Safety Items.....	9
Maintenance.....	9
Bolt Torque.....	10
Installation of Tow Bar with Bumper Mount Brackets.....	11
Hooking up Kwik-Tow™	12-13
Kwik-Tow™ Tow Bar Parts Breakdown and List.....	14
Safety Cable Kit Parts Breakdown.....	14
Auxiliary Lighting Cable Kit Parts Breakdown.....	15
Optional Tow Bar Light Bar Parts Breakdown.....	15
Warranty Statement.....	16

SAFETY

TAKE NOTE! THIS SAFETY ALERT SYMBOL FOUND THROUGHOUT THIS MANUAL IS USED TO CALL YOUR ATTENTION TO INSTRUCTIONS INVOLVING YOUR PERSONAL SAFETY AND SAFETY OF OTHERS. FAILURE TO FOLLOW THESE INSTRUCTIONS CAN RESULT IN INJURY OR DEATH.



THIS SYMBOL MEANS

ATTENTION

BECOME ALERT

YOUR SAFETY IS INVOLVED!

SIGNAL WORDS

This manual uses of the following signal words-- **DANGER**, **WARNING**, and **CAUTION**-- with safety messages. The appropriate signal word has been selected using the following guidelines.

DANGER:

Indicates an imminently hazardous situation that, if not avoided, will result in death or serious injury. This signal word is to be limited to the most extreme situations typically for tow bar components which, for functional purposes, cannot be guarded.

WARNING:

Indicates a potentially hazardous situation that, if not avoided, could result in death or serious injury, and includes hazards that are exposed when guards are removed. It may also be used to alert against unsafe practices.

CAUTION:

Indicates a potentially hazardous situation that, if not avoided, may result in minor or moderate injury. It may also be used to alert against unsafe practices.

If you have questions not answered in this manual, or require additional copies, please contact your dealer or Demco, Box 189, 4010 320th Street, Boyden, IA 51234 ph: (712) 725-2311 or (712) 725-2302 Toll Free: 1-800-543-3626 Fax: (712) 725-2380 <http://www.demco-products.com>



SAFETY...YOU CAN LIVE WITH IT



EQUIPMENT SAFETY GUIDELINES

Safety of the operator is one of the main concerns in designing and developing a new piece of equipment. Designers and manufacturers build in as many safety features as possible. However, every year many accidents occur which could have been avoided by a few seconds of thought and a more careful approach to handling equipment. You, the operator, can avoid many accidents by observing and following precautions in this manual. To avoid personal injury, study following precautions and insist those working with you, or you yourself, follow them.

Replace any caution, warning, danger or instruction safety decal that is not readable or is missing.

Do not attempt to operate this tow bar under the influence of alcohol or drugs.

Review safety instructions with all users.

Do not let children use or play with tow bar. User should be a responsible adult who has familiarized himself or herself with this manual. **DO NOT ALLOW PERSONS TO OPERATE OR ASSEMBLE THIS TOW BAR UNTIL THEY HAVE READ THIS MANUAL AND HAVE DEVELOPED A THOROUGH UNDERSTANDING OF SAFETY PRECAUTIONS AND HOW IT WORKS.**

Do not paint over, remove, or deface any safety signs or warning decals on your tow bar. Observe all safety signs and practice instructions on them.

Never exceed limits of a tow bar. If its ability to do a job safely is in question **DON'T TRY IT.**



It is the responsibility of owner to know lighting and marking requirements of local highway authorities and to install and maintain equipment to provide compliance with regulations.

Light bar kits are available from your dealer or from manufacturer.



SAFETY SIGN CARE

- Keep safety signs clean and legible at all times.
- Replace safety signs that are missing or have become illegible.
- Replacement parts that displayed a safety sign should also display current sign.
- Safety signs are available from your distributor, dealer parts department, or factory.

How to install safety signs:

- Be sure installation surface is clean and dry.
- Decide on exact position before you remove backing paper.
- Remove smallest portion of split backing paper.
- Align decal over specified area and carefully press small portion with exposed sticky backing in place.
- Slowly peel back remaining paper and carefully smooth remaining portion of decal into place.
- Small air pockets can be pierced with a pin and smoothed out using piece of decal backing paper.



REMEMBER

Your best assurance against accidents is a careful and responsible operator. If there is any portion of this manual or function you do not understand, contact your local authorized dealer or manufacturer.



BEFORE OPERATION:

- Carefully study and understand this manual and the Owner's Manual.
- Give tow bar a visual inspection for any loose bolts, worn parts, or cracked welds, and make necessary repairs. Follow maintenance safety instructions included in this manual.
- Be sure there are no tools lying on tow bar, towing unit or towed vehicle.
- Do not use tow bar until you are sure that area is clear, especially around children and animals.
- Don't hurry learning process or take tow bar for granted. Ease into it and become familiar with your tow bar.
- Practice operation of your *tow bar* and its attachments. Completely familiarize yourself and other operators with its operation before using.
- Securely attach to towing unit. Use a class III or higher receiver and attach safety cables.
- Criss cross safety cables under tow bar, secure to towing vehicle.
- Do not allow anyone to stand between vehicles when backing up.
- Make sure tow rating on towing unit is high enough for what it is towing.



DURING OPERATION

- Always follow state and local regulations regarding auxiliary lighting when towing. Be sure to check with local law enforcement agencies for your own particular regulations. Only safety cables (not elastic or nylon/plastic tow straps) should be used to retain connection between towing unit and towed vehicle in event of separation.
- Do not load towed vehicle with cargo. Towed vehicles exceeding weight limits will overload tow bar and may cause serious injury and damage.
- Beware of bystanders, **PARTICULARLY CHILDREN!** Always look around to make sure it is safe to start engine of towing unit and moving towed vehicle. This is particularly important with higher noise levels, as you may not hear people shouting.
- **NO PASSENGERS ALLOWED-** Do not carry passengers anywhere on or in towed vehicle.
- When halting operation, even periodically, set towing unit's parking brake, shut off engine, and **remove ignition key.**
- Be extra careful on inclines.
- **MANEUVER TOWING UNIT AT SAFE SPEEDS.**
- Avoid loose gravel, rocks, and holes; they can be dangerous for unit operation or movement.
- Allow for unit length when making turns.
- Do not work under raised components or attachments unless securely positioned and blocked.
- Keep all bystanders and pets clear of work area.
- Operate towing unit from operators seat only.
- As a precaution, recheck hardware on tow bar every 200 miles, and correct all problems. Follow maintenance safety procedures.



FOLLOWING OPERATION

- Following operation, or when unhooking, stop towing vehicle, set parking brake, shut off engine and **remove ignition key.**
- Store tow bar in area away from human activity.
- Do not permit children to play on or around stored tow bar.
- Make sure parked vehicle is on hard, level surface.
- Wheel chocks may be needed to prevent vehicle from rolling.



HIGHWAY AND TRANSPORT OPERATIONS

- Adopt safe driving practices:
 - Always drive at safe speed relative to local conditions and ensure that your speed is low enough for an emergency stop.

- Reduce speed prior to turns to avoid risk of overturning.
- Always keep towing unit in gear to provide engine braking when going downhill. **Do not coast.**
- **Do not drink and drive!**
- Comply with state and local laws governing highway safety.
- Local laws should be checked for all highway lighting and marking requirements.
- Plan your route to avoid heavy traffic.
- Be a safe and courteous driver. Always yield to oncoming traffic in all situations, including narrow bridges, intersections, etc.
- Watch for obstructions overhead and to both sides while towing vehicle.
- Operate with maximum visibility at all times. Make allowances for increased length and weight when making turns and stopping.



PERFORMING MAINTENANCE

- Good maintenance is your responsibility. Poor maintenance is an invitation to trouble.
- Make sure there is plenty of ventilation. Never operate engine of towing or towed unit in a closed building. Exhaust fumes may cause asphyxiation.
- Before working on tow bar, stop towing vehicle, set parking brake, turn off engine and **remove ignition key.**
- Always use proper tools or equipment for job at hand.
- Use extreme caution when making adjustments.
- Follow torque chart in owners manual when tightening bolts and nuts.
- After servicing, be sure all tools, parts and service equipment are removed.
- Do not allow grease or oil to build up.
- When replacing bolts, refer to owners manual.
- Refer to bolt torque chart in owners manual for head identification marking.
- Where replacement parts are necessary for periodic maintenance and servicing, genuine factory replacement parts must be used to restore your tow bar to original specifications. Manufacturer will not claim responsibility for use of unapproved parts and/or accessories or other damages as a result of their use.
- If the *tow bar* has been altered in any way from original design, manufacturer does not accept any liability for injury or warranty.
- A fire extinguisher and first aid kit should be kept readily accessible while performing maintenance on this tow bar.



SAFETY SIGN LOCATIONS

Types of safety sign and locations on the **Kwik-Tow™** are shown in illustration below. Good safety requires that you familiarize yourself with various safety signs, type of warning, and particular function related to that area, that requires your SAFETY AWARENESS.



WARNING: WEIGHT LIMITATIONS

There are three weight limitations involved in towing listed as follows:

1. The weight limitation imposed on your towing vehicle by it's manufacturer. You can find this in the towing vehicles owners manual, and it must be strictly observed. If you have questions, ask your auto dealer or contact the manufacturer directly.
2. The weight limitation on your hitch. The Kwik-Tow™ must only be used with a Class III, 5,000 lb. hitch, and tow ball.
3. The weight limitation on the coupler. The coupler used with the Kwik-Tow™, has a limit of 5,000 lbs. This means that you must not tow a vehicle with a Gross Vehicle Weight (G.V.W) of over 5,000 lbs. The vehicle weight might be found on the title or the registration. It can also be found on the vehicle identification tag, which is usually on the inside of the drivers door. Actual weights often vary from GVW because of differing vehicle options. If your vehicle is near the limit, we recommend that you have it weighed on a scale.



WARNING

IMPORTANT

**Do not exceed weight limitations.
Refer to operators manual.**

10/98

TB21007



WARNING

Important operator instructions

To prevent serious injury or property damage follow these safety items:

- Before operating, read and follow operators manual.
- Be sure SAFETY CABLES are attach to both towing and towed vehicles using "criss - cross" method.
- Replace all worn or damaged parts.
- Be certain all attaching pins and safety pins are in place.
- Check all attaching points after first 5 miles and every 200 miles thereafter.
- Check clearance between vehicles in turning situation.

REV 1

TB21004

⚠ WARNING: FAILURE TO FOLLOW THESE INSTRUCTIONS CAN RESULT IN LOSS OF TOWING VEHICLE CONTROL, SEPARATION OF THE TOW BAR FROM THE TOWING VEHICLE, OR SEPARATION OF THE TOWED VEHICLE FROM THE TOW BAR, CAUSING SEVERE PERSONAL INJURY, DEATH, OR PROPERTY DAMAGE.

⚠ WARNING: SAFETY ITEMS

Safety is of utmost importance at all times. To prevent personal injury or property damage, observe the following.

- Before allowing anyone to hook up or operate the Kwik-Tow™, be sure they have read and understand the proper operating procedure.
- This unit must be used with a Class III, 5,000 lb. 2" Ball Hitch.
- Be sure the steering components of the towed vehicle are properly aligned.
- This unit can be backed up in moderate increments. Any severe backwards cornering could result in damage to the Kwik-Tow™ and/or towed vehicle chassis.
- **For automatic transmissions:** Consult your vehicle owners manual for towing suitability with the drive shaft connected. Otherwise, the towed vehicle will have to be equipped with a transmission pump or drive shaft disconnect.
- Be sure the **SAFETY CABLES w/retainers** are hooked to both the towing and towed vehicles using the crisscross method.
- Do not load the towed vehicle with anything as you may exceed the towing capacity of the tow bar.
- Check to make sure that all lights are in proper working order.
- Make sure the optional light bar is fastened securely at the rear of the towed vehicle.

MAINTENANCE

Periodically check all bolts and nuts to ensure proper tension or torque.

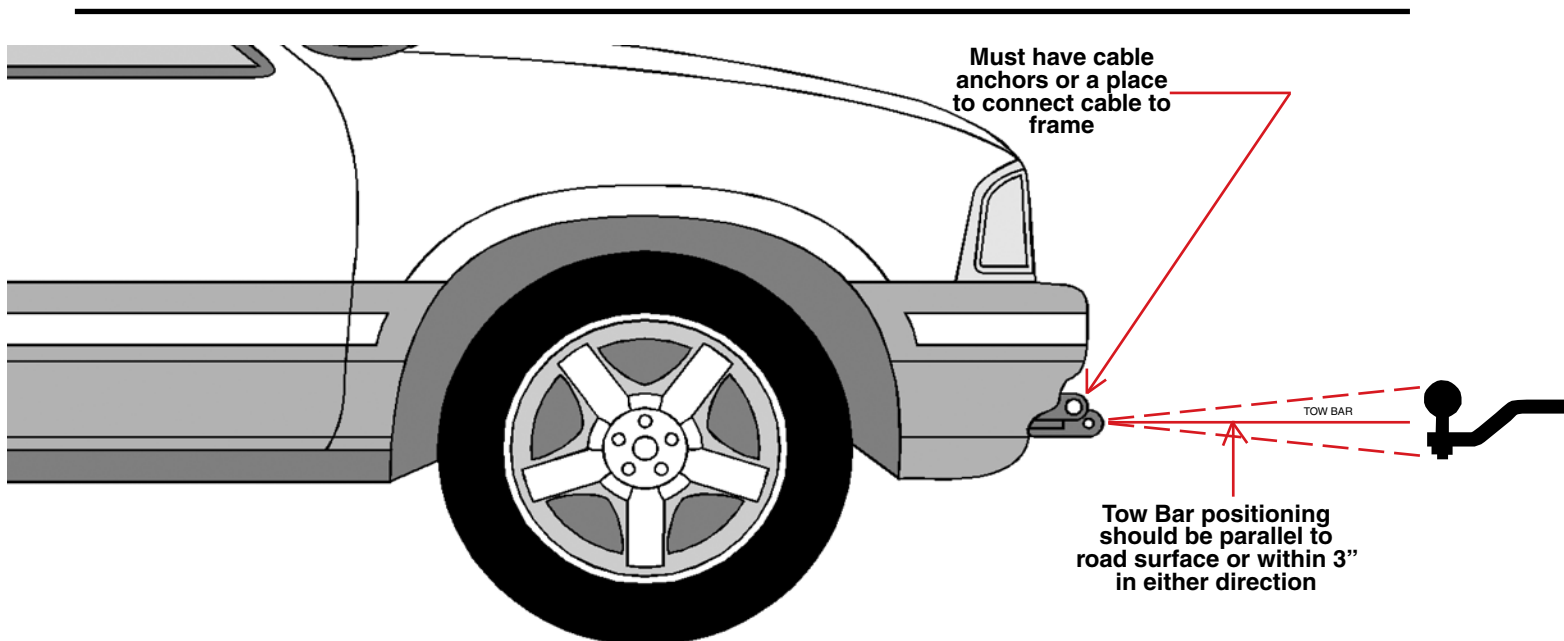
Check all pivot points for wear or breakage.

Replace any worn or damaged parts with O.E.M. parts only.

DO NOT lubricate any pivot points of the Kwik-Tow™.

If tow bar is not parallel to the ground within 2", an offset ball hitch may be purchased from your hitch supplier.

Thank you for Purchasing Demco Products.



BOLT TORQUE

TORQUE DATA FOR STANDARD NUTS, BOLTS, AND CAPSCREWS.

Tighten all bolts to torques specified in chart unless otherwise noted. Check tightness of bolts periodically, using bolt chart as guide. Replace hardware with same grade bolt.

NOTE: Unless otherwise specified, high-strength Grade 5 hex bolts are used throughout assembly of equipment.



Torque Specifications

Bolt Torque for Standard bolts *

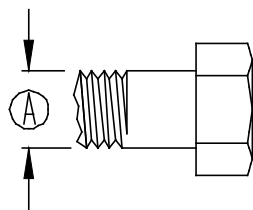
"A"	GRADE 2		GRADE 5		GRADE 8	
	lb-ft	(N.m)	lb-ft	(N.m)	lb-ft	(N.m)
1/4"	6	(8)	9	(12)	12	(16)
5/16"	10	(13)	18	(25)	25	(35)
3/8"	20	(27)	30	(40)	45	(60)
7/16"	30	(40)	50	(70)	80	(110)
1/2"	45	(60)	75	(100)	115	(155)
9/16"	70	(95)	115	(155)	165	(220)
5/8"	95	(130)	150	(200)	225	(300)
3/4"	165	(225)	290	(390)	400	(540)
7/8"	170	(230)	420	(570)	650	(880)
1"	225	(300)	630	(850)	970	(1310)

Bolt Torque for Metric bolts *

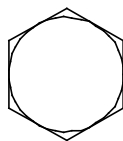
"A"	CLASS 8.8		CLASS 9.8		CLASS 10.9	
	lb-ft	(N.m)	lb-ft	(N.m)	lb-ft	(N.m)
6	9	(13)	10	(14)	13	(17)
7	15	(21)	18	(24)	21	(29)
8	23	(31)	25	(34)	31	(42)
10	45	(61)	50	(68)	61	(83)
12	78	(106)	88	(118)	106	(144)
14	125	(169)	140	(189)	170	(230)
16	194	(263)	216	(293)	263	(357)
18	268	(363)	--	--	364	(493)
20	378	(513)	--	--	515	(689)
22	516	(699)	--	--	702	(952)
24	654	(886)	--	--	890	(1206)

Torque figures indicated are valid for non-greased or non-oiled threads and heads unless otherwise specified. Therefore, do not grease or oil bolts or capscrews unless otherwise specified in this manual. When using locking elements, increase torque values by 5%.

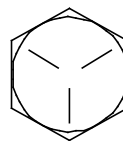
* GRADE or CLASS value for bolts and capscrews are identified by their head markings.



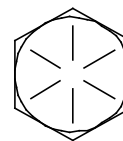
GRADE-2



GRADE-5



GRADE-8



CLASS 8.8



CLASS 9.8



CLASS 10.9

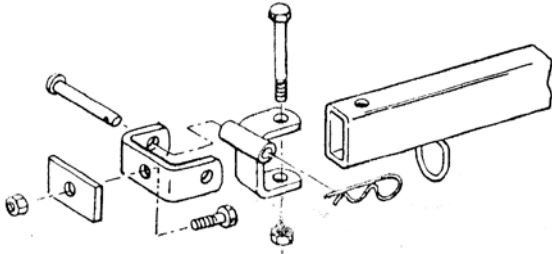


Installation of Tow Bar with Bumper Mount Brackets

Inspect all parts before using to insure that all parts are in original condition, and not damaged.

WARNING: This tow bar CAN NOT be used on vehicles weighing over 5000 lbs. The tow bar brackets should be attached to a rigid bumper or custom made frame attached to the frame of the towed vehicle. Some bumpers may require reinforcement for increased strength. NEVER attach the tow bar brackets to any bumper with a soft outer covering.

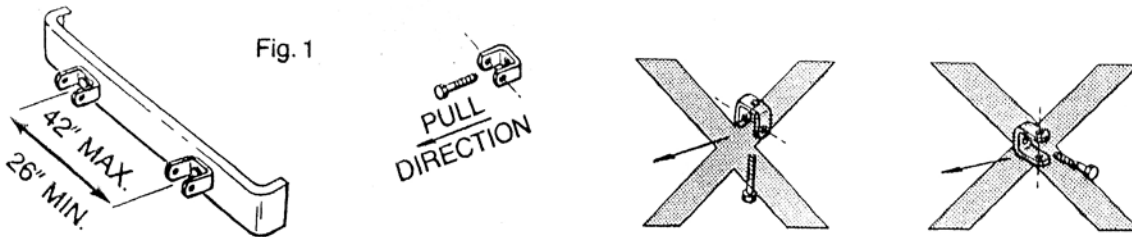
IT IS THE RESPONSIBILITY OF THE INSTALLER AND THE USER TO OBTAIN A SAFE AND SECURE ATTACHMENT FOR THE TOW BAR BRACKETS.



1. Attach the bumper brackets to the front bumper or other rigid attachment. Center the tow bar on the bumper face. Drill two 9/16" holes. The holes must be no less than 26" apart and no more than 42" apart and spaced equally from the center line. It is best to use a 35" to 42" spacing, for maximum strength.

2. Install one 1/2" x 1-1/2" bolt thru the bumper bracket, bumper, 1/4" reinforcing pad, and into a 1/2" locknut. LEAVE LOOSE. Repeat other side.

BUMPER BRACKETS MUST BE MOUNTED OPENING FORWARD ON THE TOWED VEHICLE. MOUNTING BOLTS MUST POINT IN A FORE/AFT DIRECTION. See Fig. 1.



3. Loosen four 3/8" locknuts on the coupler and attach the tow bar arms to the bumper brackets using two 1/2" pins and spring clips. LEAVE LOOSE.

4. Tighten the two 1/2" bumper bracket bolts to 75 Ft-Lbs. torque. Align the coupler to the center line of the vehicle and tighten the four 3/8" locknuts to 35 Ft-Lbs of torque.

5. Insure that the hitch on the tow vehicle is rated for 5000 Lbs. MGTWR. Set the ball height to level the tow bar. The ball height should be no more than 3" above the bumper brackets. Use only a 2" diameter hitch ball rated at 5000 Lbs. minimum.

6. Lubricate the hitch ball. Close the coupler and secure it with a pin or lock. Wire the towed vehicles lights to the tow vehicle or use lightbar.

7. Attach safety cables from the frame of the tow vehicle to the frame of the towed vehicle. Cross the cables under the coupler of the tow bar.

8. CHECK ALL FASTENERS AND CONNECTIONS.

9. Read all warnings on the tow bar warning label and this sheet before using the tow bar.

HOOKING UP THE VEHICLE TO BE TOWED w/Baseplate



Step 1. Place tow bar and all items needed for towing in front of towed vehicle. Inspect cables and tow bar parts for wear before towing.



Step 3. Run safety cables thru loops on bottom side of tow bar and attach the safety cables to the towed vehicle baseplate. **Note:** Be sure safety clips are in working condition before each trip.



Step 2. Attach each leg of the Kwik-Tow™ to the towed vehicle baseplate pull ears. Secure using the attaching pins. To secure the attaching pins insert the Quick-Lock Pin into the holes through the attaching pins and lock into place. Be sure that the Quick-Lock Pins are in the locking position.

NOTE: Follow these instructions anytime Quick-Lock Pin is used



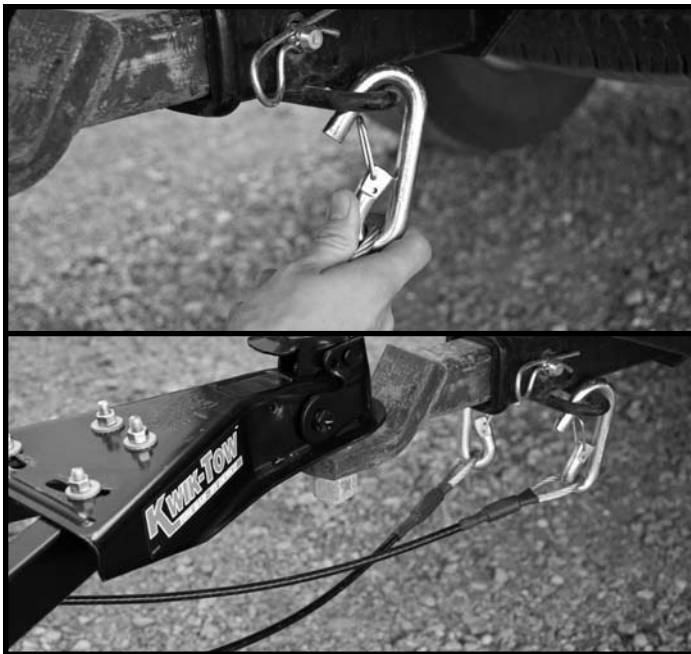
Quick-Lock Pin must be closed properly. Fold ring of Quick-Lock Pin to the side of the pin that allows ring to snap against pin. If you have folded it's ring the wrong way it will not snap against pin.



Step 4. Attach coupler to hitch ball on towing vehicle. The ball must be 2" in diameter. Load rating of ball and ALL hitch parts must equal or exceed gross weight of towed vehicle. Place one or two drops of oil on ball before coupling. **THE Kwik-Tow™ MUST BE NEARLY LEVEL.** (See diagram on page 9)



Step 5. Make sure ball coupler is properly mounted on the ball hitch. Flip the lever lock back towards the towed vehicle to lock the coupler to the ball. Insert the safety lock pin through the lever lock as shown above to prevent it from unlocking (not Provided). **NOTE: Center the coupler in front of the towed vehicle, and tighten the two 3/8" pivot nuts (circled in photo).**

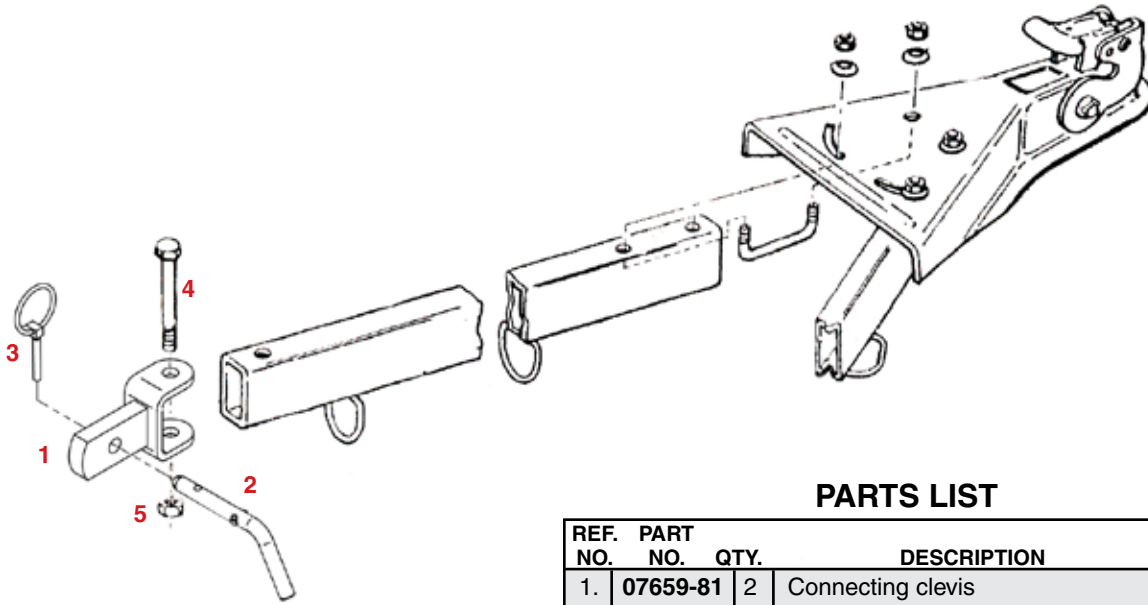


Step 6. Connect the other end of the safety cables to the towing vehicle. Make sure that the safety cables are connected in a "crisscross" method. **Note:** Be sure safety clips are in working condition before each trip.



Step 7. Once you are secured to the tow bar release the towed vehicles parking brake, shift transmission into neutral and unlock the steering wheel. **NOTE:** For four-wheel drive units the transfer unit must be shifted into neutral also. Pull forward approximately 20 feet and stop. Examine the Kwik-Tow™, make sure that there is no binding of cables, and that everything travels properly. Check towed vehicle operators manual for proper towing instructions for transmission selection.

KWIK-TOW PARTS BREAKDOWN 9511011

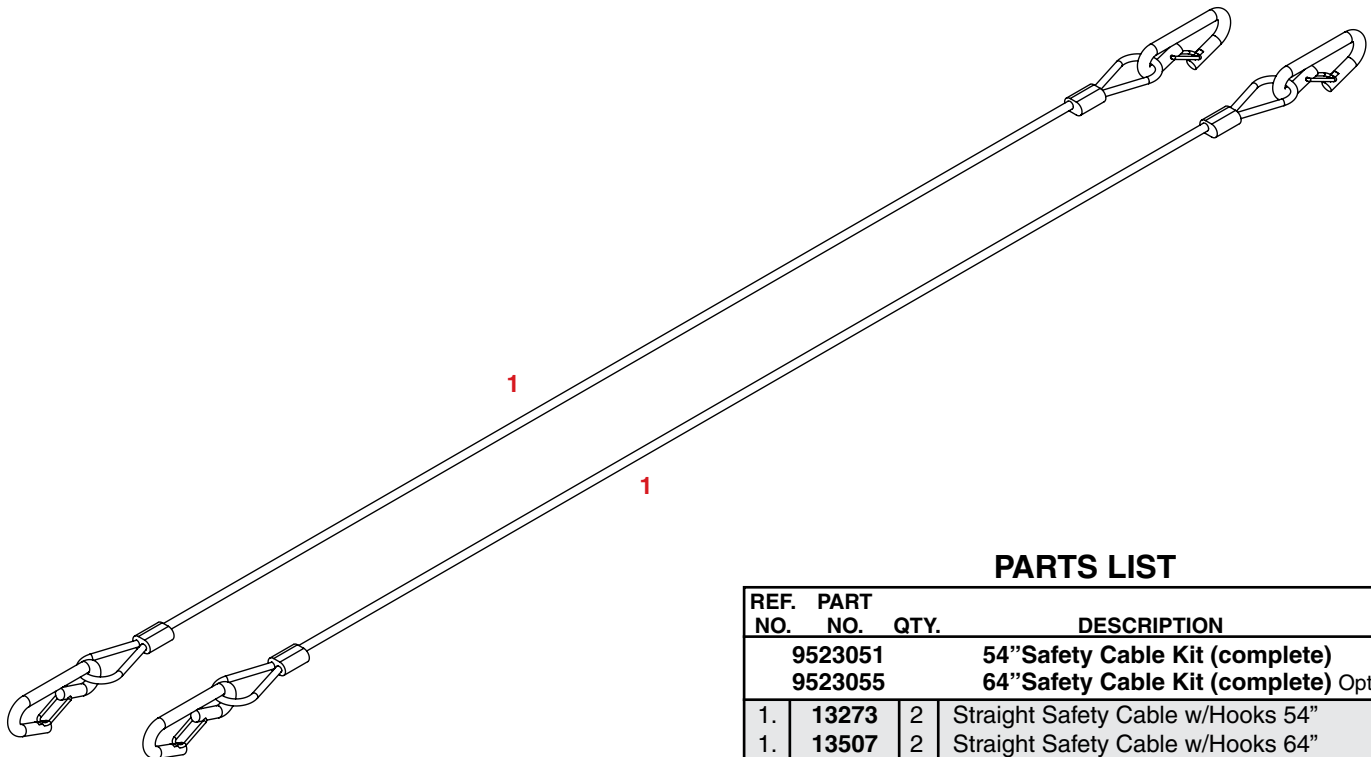


PARTS LIST

REF. NO.	PART NO.	QTY.	DESCRIPTION
1.	07659-81	2	Connecting clevis
2.	03878-95	2	Attaching pin
3.	02397	2	Lynch Pin
4.	01897	2	1/2" NC x 3-1/2" Hex Hd. Bolt Gr. 5
5.	02178	2	1/2" Nylon Insert Lock Nut

Please order replacement parts by **PART NO.** and **DESCRIPTION.**

SAFETY CABLES



PARTS LIST

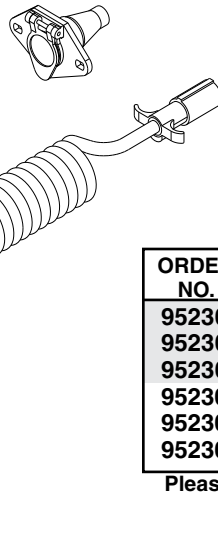
REF. NO.	PART NO.	QTY.	DESCRIPTION
	9523051		54" Safety Cable Kit (complete)
	9523055		64" Safety Cable Kit (complete) Optional
1.	13273	2	Straight Safety Cable w/Hooks 54"
1.	13507	2	Straight Safety Cable w/Hooks 64"

Please order replacement parts by **PART NO.** and **DESCRIPTION.**

AUXILIARY LIGHTING CABLE (OPTIONAL)



Possible mounting location for lighting receptacle in vehicle air dam.



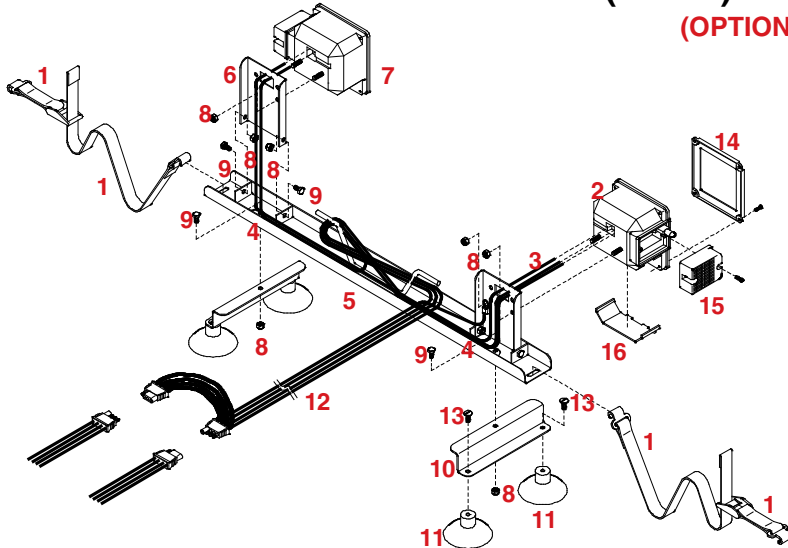
NOTE: To be used with optional Light Bar, the ends will have to be cut off light bar harness. This end will then need to be wired to the receptacle of the auxiliary lighting kit.

AVAILABLE WIRING KITS

ORDER NO.	DESCRIPTION
9523004	4-Way Auxiliary Coiled Lighting Cable w/recpt.
9523006	6-Way Auxiliary Coiled Lighting Cable w/recpt.
9523009	9523004 & Towed Vehicle Tail Light Wiring/Diode Kit
9523010	Towed Vehicle Tail Light Wiring/Diode Kit Only
9523011	9523006 & Towed Vehicle Tail Light Wiring/Diode Kit
9523054	7 to 6-Way Auxiliary Coiled Lighting Cable w/recpt.

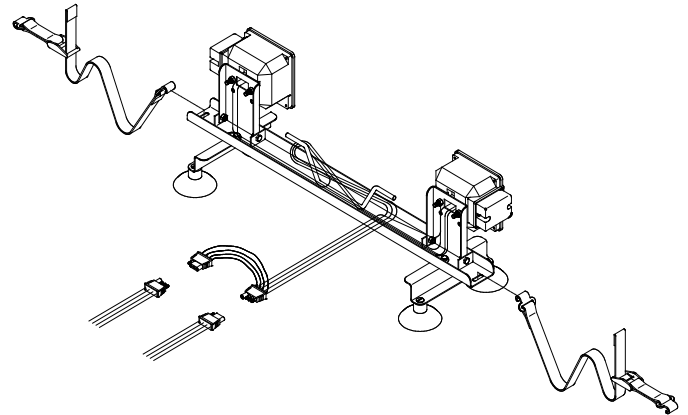
Please order replacement parts by PART NO. and DESCRIPTION.

LIGHT BAR (KKLB) PARTS BREAKDOWN (OPTIONAL)



COLOR CODE FOR WIRING HARNESS

WHITE	Ground
BROWN	Tail Lights, License Plate Lights, Light Cluster Bar & Clearance Lights
YELLOW	Left Turn and Stop
GREEN	Right Turn and Stop



NOTE: The wires to the optional light bar should be run along the car and fastened so as not to damage the finish of the towed vehicle.

LIGHT BAR PARTS LIST

REF. NO.	PART NO.	QTY.	DESCRIPTION
KKLB Kwik-Tow™ Light Bar (complete)			
1.	01772	2	Nylon Security Strap with hooks & tightener
2.	01857	1	Left Tail/ Brake and Signal Light w/Lenses
3.	01773	1	Brown Jumper Wire
4.	01886	4	Wire Holder (metal)
5.	02385	1	Light Bar Framework
6.	02386	2	Adjustable Light Bracket
7.	01856	1	Right Tail/ Brake and Signal Light w/Lenses
8.	02772	10	1/4"-20UNC Nylon Insert Locknut
9.	00092	6	1/4"-20UNC x 1/2" Hex Head Bolt
10.	01777	2	Light Bar "Z" Bracket
11.	01778	4	3" Suction Cup w/Bolt (#13)
12.	02198	1	Light Bar Wiring Harness (new style)
13.	00068	4	1/4"-20UNC x 3/4" Hex Head Bolt
14.	01911	-	Large Red Lens
15.	01912	-	Small Red Lens
16.	01890	-	Clear Lens

Please order replacement parts by PART NO. and DESCRIPTION.

TESTING LIGHTS BEFORE USE

1. With headlights in "ON" position, the tail lights and the clearance lights should be lighted.
2. Start engine and have someone depress brake pedal. Brake lights of the light bar and towing vehicle should come "on" and "off" simultaneously with each application.
3. Turn left turn signal on. Left turn light of light bar and towing vehicle should flash simultaneously. Should the turn signal lights of the light bar function opposite to those of the towing vehicle, it is probable that the **YELLOW** and **GREEN** wires have been reversed. Check the plug connections to make sure wire colors are not crossed at any point. If plug connection is incorrect, correct problem by reversing yellow and green wire connection on the towing vehicle.

DEMCO PRODUCTS - *Kwik-Tow* Tow Bar ORIGINAL PURCHASERS LIMITED WARRANTY

1. Extent and Duration of this Warranty:

Your Demco *Kwik-Tow* has a Lifetime Limited warranty to be free from defects in materials and workmanship under normal use and service from date of purchase by the original (first) retail owner, or until it is resold or transferred by the original owner. Any part of the Demco *Kwik-Tow* found in the judgment of the manufacturer to be defective in materials or workmanship will be repaired or replaced at the manufacturer's option without charge for parts or labor to the original owner.

2. Manufacturer and Warrantor of Tow Bar:

Demco
4010 320th Street
P.O. Box 189
Boyden, IA 51234
(712) 725-2311

3. Repair or Replacement Procedure:

If your Demco Tow Bar develops a defect during the warranty period, promptly notify Demco customer service department. Until such notice is received, Warrantor will not be responsible for any repair or replacement.

Upon receipt of notice from you, Warrantor will have a choice of options in replacing any part it determines to be defective:

- a) Warrantor may require you at your own expense to deliver or ship the part to its factory or authorized dealer. Any defective part will be repaired or replaced and returned to you free of charge. Any part returned to Warrantor and found not to be defective will be returned to you freight collect with an explanation.
- b) Warrantor may elect to ship a new part to its dealer to be exchanged free of charge for the defective part returned by you to the dealer.
- c) Warrantor may elect to ship or deliver a replacement part to your address.

4. Limitations on Warranty Coverage:

Coverage under this warranty will be valid only if the customer warranty card is returned by the original purchaser within 30 days of purchase.

Coverage under this warranty will be effective only when a copy of the original invoice, showing the date and location of purchase, accompanies any claim for warranty.

Warrantor has no liability whatsoever and this warranty is null and void if any Demco Tow Bar has been misassembled or subjected to neglect, negligence, misuse, accident or operated in any way contrary to the operating and maintenance instructions as specified in the Demco Owner's Manual for that model tow bar.

This warranty does not cover any tow bar that has been altered or modified so as to affect the tow bar's operation, performance or durability, or that has been modified to change the intended use of the tow bar.

necessary by normal use of parts, accessories or other equipment which in the judgment of Warrantor, are either incompatible with the Demco Tow Bar, or affect its operation, performance or durability.

This warranty does not cover:

- 1) normal wear and tear
- 2) road film or gravel damage to paint
- 3) paint
- 4) rust damage
- 5) Any Demco Tow Bar that has been loaded in excess of the load capacity stated on the tow bar identification label.

Warrantor has a policy of continuous product improvement. We reserve the right to change or improve the design of any Demco Tow Bar model, including but not limited to state of the art changes, without assuming any obligation to modify any tow bar previously manufactured.

Warrantor assumes no responsibility to the owner for loss of use of the tow bar, loss of time, inconvenience or other damage consequential or otherwise, including, but not limited to expense for gasoline, expense of transporting the tow bar to the dealer and expense of returning the tow bar, mechanic's travel time, telephone or telegram charges, road service/towing charges, rental of another tow bar during the time warranty repairs are being performed, travel, lodging, loss or damage to personal property or loss of revenue or earnings.

5. Limitations of Implied Warranties:

All implied warranties, if any, expire and terminate upon expiration of this warranty. Some states do not allow limitation on how long an implied warranty lasts, so this limitation may not apply to you.

6. Limitation of Consequential Damages:

Warrantor's responsibility under this warranty extends solely to repair or replacement of your Demco Tow Bar and its component parts.

Warrantor does not assume responsibility for, nor shall it be liable for, any special, incidental or consequential damages. Some states do not allow the exclusion or limitation on incidental or consequential damages, so the above exclusion or limitation may not apply to you.

7. Use of Serial Number Identification (SN):

The SN is a 6 digit number located on the tow bar identification label. The label is located on the receiver head joint. Be sure to include the SN number in all communications with Warrantor or its dealers concerning the warranty.
Serial No. _____

8. Purchaser's Rights:

This warranty gives you specific legal rights, and you may also have other rights which vary from state to state.

9. Exclusive Warranty:

This is the only express warranty made by Demco on your Demco Tow Bar and no agent, employee, or other person is allowed to change or add to this warranty.

In addition, the warranty does not extend to repairs made



Warranty Registration

4010 320th Street • Box 189 • Boyden, Iowa 51234
Toll Free 800-54DEMCO (800-543-3626) • FAX 800-845-6420
www.demco-products.com

Ag	<input type="radio"/>
RV	<input type="radio"/>
Rental	<input type="radio"/>
Brakes	<input type="radio"/>
Marine	<input type="radio"/>

	Very Satisfied	Satisfied	Dissatisfied	Very Dissatisfied
How satisfied are you with our product?	<input type="radio"/>	<input type="radio"/>	<input type="radio"/>	<input type="radio"/>
How satisfied are you with the dealership/distributor sales staff? Dealer/Distributor Name _____ City _____ State _____	<input type="radio"/>	<input type="radio"/>	<input type="radio"/>	<input type="radio"/>
How satisfied are you with the company sales staff?	<input type="radio"/>	<input type="radio"/>	<input type="radio"/>	<input type="radio"/>
How satisfied are you with the delivery?	<input type="radio"/>	<input type="radio"/>	<input type="radio"/>	<input type="radio"/>
Did you have any contact with a Demco Representative? If YES , how satisfied were you?	YES <input type="radio"/>	NO <input type="radio"/>	<input type="radio"/>	<input type="radio"/>
I would recommend this product to my family and friends.	YES	NO		
Would you purchase again from DEMCO?	YES	NO		
Since taking delivery, have you been contacted by the dealer?	YES	NO		
Did you have any problems with this DEMCO product? If YES , are you satisfied with the company's resolution of your problem?	YES <input type="radio"/>	NO <input type="radio"/>	<input type="radio"/>	<input type="radio"/>

Please list the specific source of information prompting this purchase.

After purchasing this product, do you see any needed product improvement? _____ If yes, what improvement? _____

What other products would you like to see DEMCO offer? _____

Comments _____

Owner's Name: _____ Mailing Address: _____

City: _____ State: _____ Zip Code: _____

Model#: _____

Serial #: _____

Purchase Date: _____

Owner's Signature: _____

Please return to DEMCO By FAX or tri-folding this form to the backside, it is pre-addressed.

Postage

*Demco
4010 320th Street, Box 189
Boyden, Iowa 51234*

NOTES:



P.O. BOX 189
4010 320th St., BOYDEN, IA. 51234
PH: (712) 725-2311 or (712) 725-2302
FAX: (712) 725-2380
TOLL FREE: 1-800-54DEMCO (1-800-543-3626)
www.demco-products.com