



Dethmers Manufacturing Company

— DOING OUR BEST TO PROVIDE YOU THE BEST —

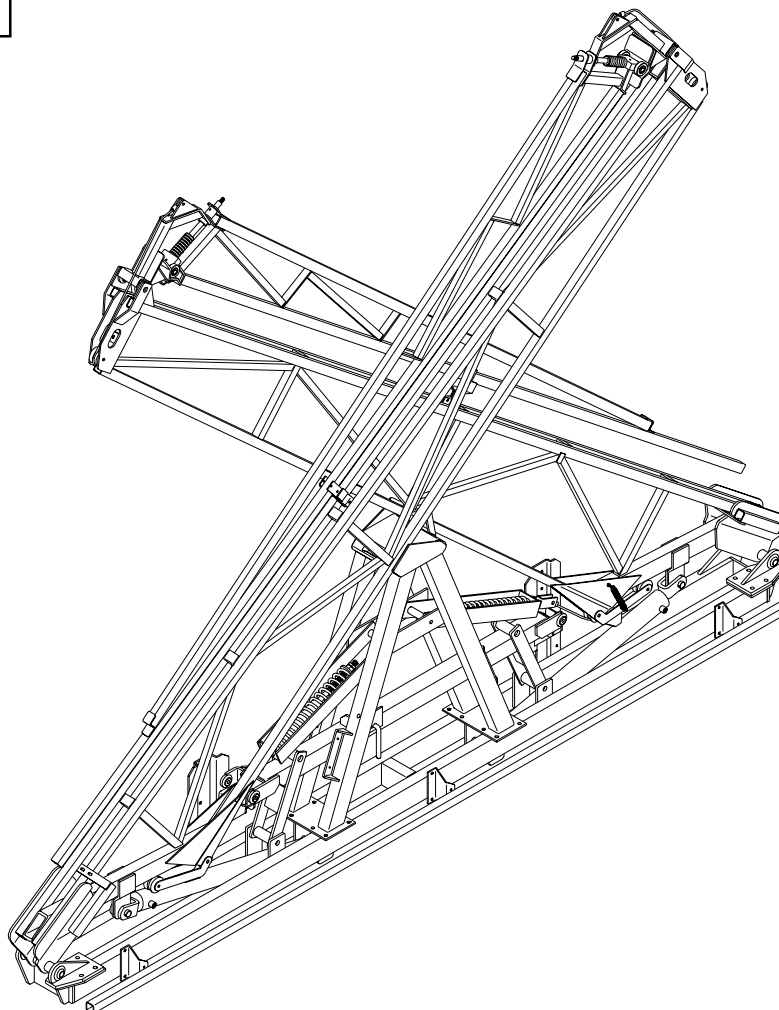
HYDRAULIC X-FOLD

45', 50', & 60' BOOM W/12' CTR

OWNERS/OPERATORS MANUAL

ASSEMBLY
CALIBRATION
OPERATION
REPLACEMENT PARTS

READ complete manual CAREFULLY
BEFORE attempting operation.



DEMCO • Dethmers Mfg. Co. • 4010 320th St. • P.O. Box 189 • Boyden, IA 51234
PH: (712) 725-2311 or (712) 725-2302 • Toll Free: 1-800-543-3626 • FAX: 1-800-845-6420
www.demco-products.com

Thank you for purchasing a Demco sprayer boom. We feel you have made a wise choice and hope you are completely satisfied with your new sprayer boom. If you have any questions regarding the applications of certain solutions or chemicals, contact your chemical supplier and follow chemical manufacturer recommendations as well as all licensing and use restrictions or regulations.



WARNING: TO AVOID PERSONAL INJURY OR PROPERTY DAMAGE, OBSERVE FOLLOWING INSTRUCTIONS:

Chemicals are dangerous. Know exactly what you're going to do and what is going to happen before attempting to work with these products. Improper selection or use can injure people, animals, plants and soil.

Always wear protective clothing such as coveralls, goggles and gloves when working with chemicals or sprayer.

Be sure to dispose of all unused chemicals or solutions in a proper and ecologically sound manner.

GENERAL INFORMATION

1. Unless otherwise specified, high-strength (grade5) (3 radial-line head markings) hex head bolts are used throughout assembly of this sprayer.
2. Whenever terms "**LEFT**" and "**RIGHT**" are used in this manual it means from a position behind sprayer and facing forward.
3. When placing a parts order, refer to this manual for proper part numbers and place order by **PART NO., DESCRIPTION, and COLOR.**

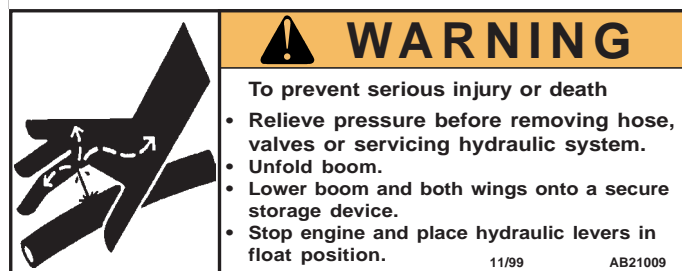
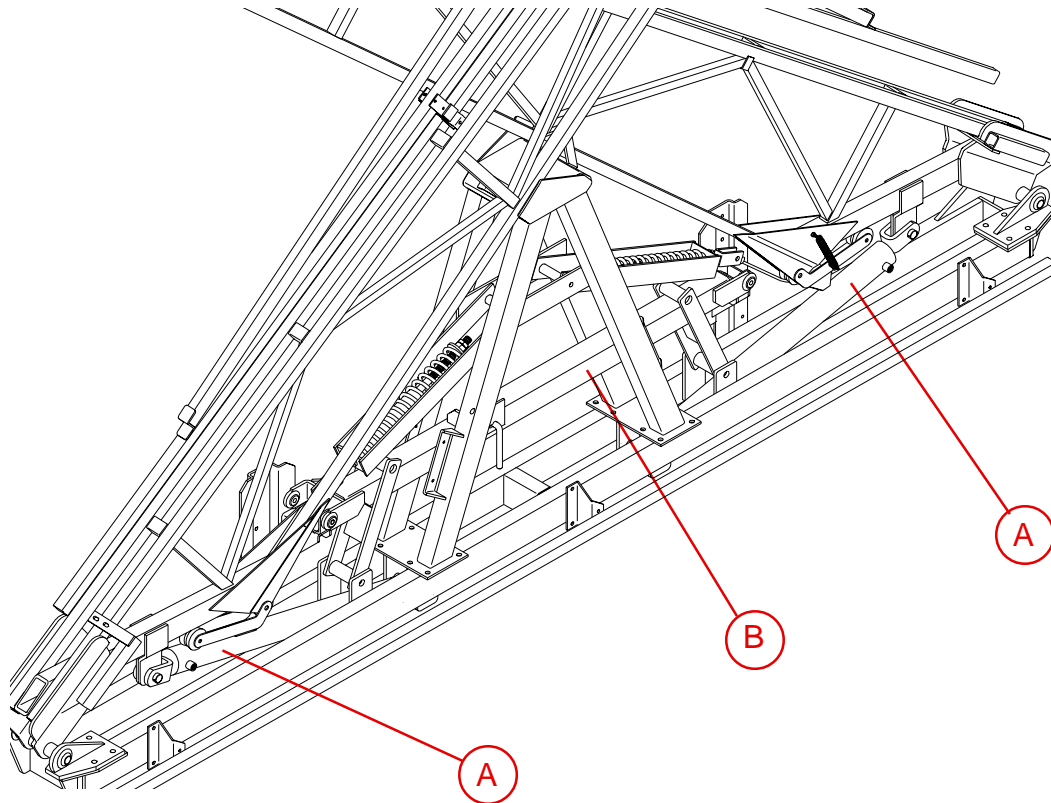
Table of Contents

General information	2
Safety Sign Locations	3
Bolt Torque	4
Center Section Parts Breakdown & Parts List	5
Center Section Assembly Instructions	6
Wing Assembly Instructions	7
Wing Parts Breakdown and Parts List	7-8
3-Point Assembly Parts Breakdown, Parts List, & Assembly Instructions	9
Trailer, Conquest, & Rear Mount Parts Breakdown, Parts List, & Assembly Instructions	10
Rear Mount Parts Breakdown, Parts List, & Assembly Instructions	11
Ground Storage Stands Parts Breakdown, Parts List, & Assembly Instructions	12
Manual Height Adjustment Parts Breakdown, Parts List, & Assembly Instructions	13
Hydraulic Height Adjustment Parts Breakdown, Parts List, & Assembly Instructions	14
2 Cylinder Hydraulic Parts Breakdown & Parts List	15
3 Cylinder Hydraulic Parts Breakdown & Parts List	16
Control Box Parts Breakdown & Parts List	17
Wheel Tip Protector Parts Breakdown & Parts List	18
Tip Placement	18
Drip Free Nozzle Parts Breakdown & Parts List	19
TeeJet Single Nozzle Parts Breakdown & Parts List	19
TeeJet 3-Way Nozzle Parts Breakdown & Parts List	20
X-Fold Boom Operation Instructions	21
Sprayer Calibration Procedure	22
Sprayer Checklist	23

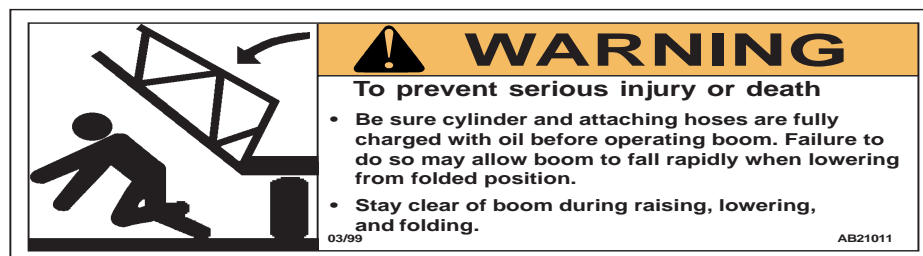


SAFETY SIGN LOCATIONS

Types of safety sign and locations on equipment are shown in illustration below. Good safety requires that you familiarize yourself with various safety signs, type of warning, and area or particular function related to that area, that requires your SAFETY AWARENESS.



A. AB21009 Located on Wing Fold/Unfold Hydraulic Cylinder



B. AB21011 Located on Auto-Level Mounting Tube Inside iA Frame

BOLT TORQUE

TORQUE DATA FOR STANDARD NUTS, BOLTS, AND CAPSCREWS.

Tighten all bolts to torques specified in chart unless otherwise noted. Check tightness of bolts periodically, using bolt chart as guide. Replace hardware with same grade bolt.

NOTE: Unless otherwise specified, high-strength Grade 5 hex bolts are used throughout assembly of equipment.



Torque Specifications

Bolt Torque for Standard bolts *

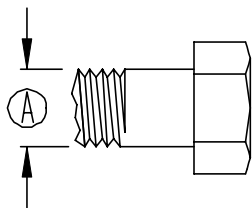
"A"	GRADE 2		GRADE 5		GRADE 8	
	lb-ft	(N.m)	lb-ft	(N.m)	lb-ft	(N.m)
1/4"	6	(8)	9	(12)	12	(16)
5/16"	10	(13)	18	(25)	25	(35)
3/8"	20	(27)	30	(40)	45	(60)
7/16"	30	(40)	50	(70)	80	(110)
1/2"	45	(60)	75	(100)	115	(155)
9/16"	70	(95)	115	(155)	165	(220)
5/8"	95	(130)	150	(200)	225	(300)
3/4"	165	(225)	290	(390)	400	(540)
7/8"	170	(230)	420	(570)	650	(880)
1"	225	(300)	630	(850)	970	(1310)

Bolt Torque for Metric bolts *

"A"	CLASS 8.8		CLASS 9.8		CLASS 10.9	
	lb-ft	(N.m)	lb-ft	(N.m)	lb-ft	(N.m)
6	9	(13)	10	(14)	13	(17)
7	15	(21)	18	(24)	21	(29)
8	23	(31)	25	(34)	31	(42)
10	45	(61)	50	(68)	61	(83)
12	78	(106)	88	(118)	106	(144)
14	125	(169)	140	(189)	170	(230)
16	194	(263)	216	(293)	263	(357)
18	268	(363)	--	--	364	(493)
20	378	(513)	--	--	515	(689)
22	516	(699)	--	--	702	(952)
24	654	(886)	--	--	890	(1206)

Torque figures indicated are valid for non-greased or non-oiled threads and heads unless otherwise specified. Therefore, do not grease or oil bolts or capscrews unless otherwise specified in this manual. When using locking elements, increase torque values by 5%.

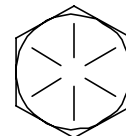
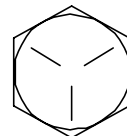
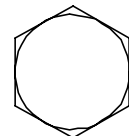
* GRADE or CLASS value for bolts and capscrews are identified by their head markings.



GRADE-2

GRADE-5

GRADE-8



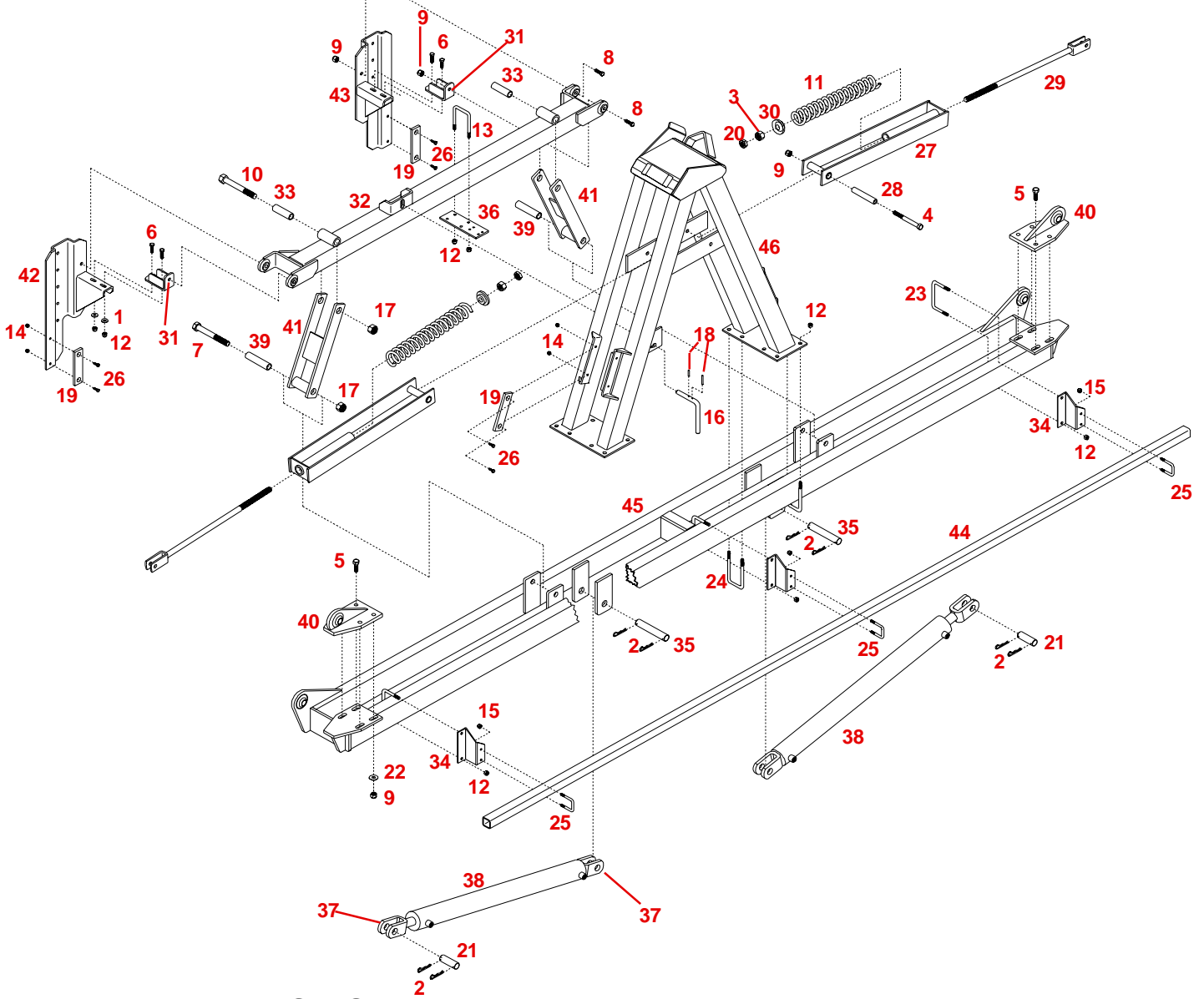
CLASS 8.8

CLASS 9.8

CLASS 10.9



CENTER SECTION BREAKDOWN



PARTS LIST

REF. NO.	PART NO.	QTY. REQD	DESCRIPTION
1.	00059	4	3/8" Flatwasher
2.	00116	8	Cotter Pin (5/32")
3.	00253	2	3/4"-10 UNC Hex Nut
4.	00349	2	1/2"-13 UNC x 6" Hex Head Bolt
5.	00482	8	1/2"-13 UNC x 1-3/4" Hex Head Bolt
6.	00523	4	3/8"-16 UNC x 1-1/4" Hex Head Bolt
7.	00638	2	3/4"-10 UNC x 6" Hex Head Bolt
8.	01253	4	1/2"-13 UNC x 2" Hex Head Bolt
9.	02178	14	1/2"-13 UNC Nylon Insert Locknut
10.	02389	2	3/4"-10 UNC x 5" Hex Head Bolt
11.	02475-30	2	Compression Spring
12.	02592	28	3/8-16 UNC Nylon Insert Locknut
13.	02759	1	3/8"-16 UNC x 3" Square U-Bolt
14.	02772	12	1/4"-20 UNC Nylon Insert Locknut
15.	02802	6	5/16"-18 UNC Nylon Insert Locknut
16.	02951-95	1	Auto-Level Lock Pin
17.	02961	4	3/4"-10 UNC Nylon Insert Locknut
18.	03099	2	3/16" x 1" Roll Pin
19.	03324	6	Wear Strip
20.	03701	2	3/4"-10 UNC Hex Jam Nut
21.	03738-95	2	Upper Hydraulic Cylinder Pin (1" Dia. x 3" Long)
22.	04189	8	1/2" ID Machine Washer
23.	04494	3	3/8"-16 UNC x 2-3/4" x 4-1/8" Square U-Bolt
24.	05583	8	3/8"-16 UNC x 2-1/8" x 4-7/8" Square U-Bolt

REF. NO.	PART NO.	QTY. REQD	DESCRIPTION
25.	05678	3	5/16"-18 UNC x 1-1/2" x 2-1/4" Square U-Bolt
26.	05732	12	1/4"-20 UNC x 1" Slotted Flat Head Screw
27.	07566-30	2	Spring Housing
28.	07567-95	2	Spacer Bushing
29.	07568-30	2	Spring Shaft
30.	07569-95	2	Compression Spring Cap
31.	07573-30	2	Mounting Joint Bracket
32.	07574-30	1	Auto-Level Mounting Tube
33.	07575 -95	2	Upper Auto-Level Pivot Tube
34.	07578-30	3	Center Tip Tube Mounting Plate
35.	07585-95	2	Lower Hydraulic Cylinder Pin (1" Dia. x 5-3/4" Long)
36.	09039-30	1	3-Way Mounting Plate
37.	09741-30	4	Cylinder Clevis End
38.	10197-30	2	2-1/2" x 30" Hydraulic Cylinder
39.	07576-95	2	Lower Auto-Level Pivot Tube
40.	07554-30	2	Adjustable Inner Joint Bracket
41.	07570-30	2	Auto-Level Swing Arms
42.	07571-30	1	Left Boom Mounting Bracket
43.	07572-30	1	Right Boom Mounting Bracket
44.	07577-30	1	Center Section Tip Mounting Tube
45.	07553-?	1	Boom Center Tube Assembly
46.	07555-?	1	Boom Rest "A" Frame

?=10 (Red)
20 (Green)

Please order replacement parts by PART NO. and DESCRIPTION.

CENTER SECTION ASSEMBLY INSTRUCTIONS

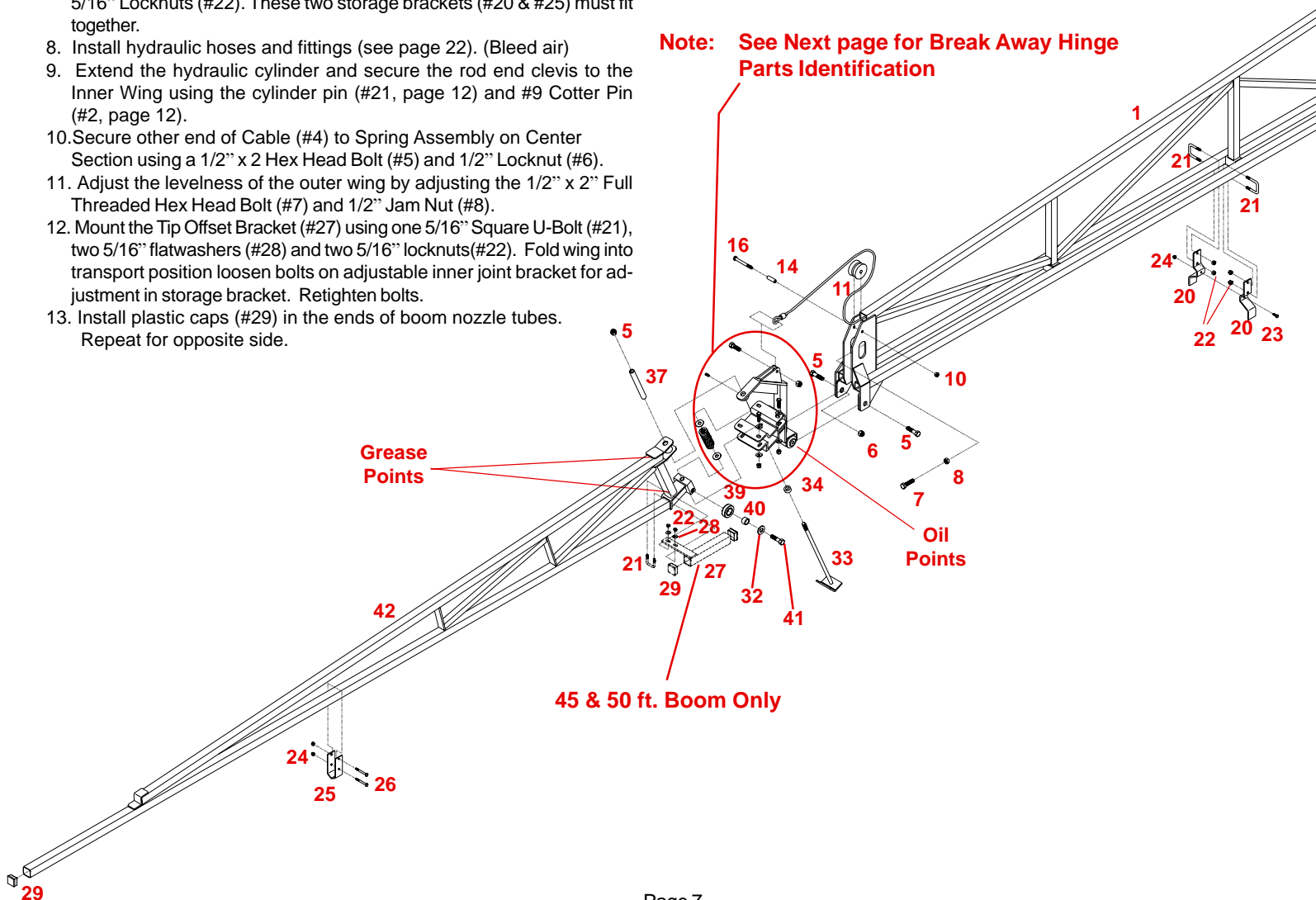
1. Support the Center Tube Assembly (#45) on two saw horses or other stable supports. Attach the Boom Rest "A" Frame (#46) using eight 3/8" Square U-Bolts (#24) and sixteen 3/8" Nylon Insert Locknuts (#12). The "A" Frame Assembly (#46) must be centered on Tube Assembly (#45).
2. Secure the Auto-Level Lock Pin (#16) to the "A" Frame Assembly (#46) using two 3/16" x 1 Roll Pins (#18). Stabilize the Auto-Level Mounting Tube (#32) by using the Lock Pin (#16).
3. Attach the Wear Strips (#19) to the "A" Frame Assembly using eight 1/4" x 1" Slotted Flat Head Screws (#26) and eight 1/4" Nylon Insert Locknuts (#14) (Do Not Over Tighten). Slide the Auto-Level Mounting Tube (#32) inside the "A" Frame Assembly (#46). The Mounting Tube (#32) must be tipped on its side during installation.
4. Attach the Swing Arms (#41) to the Tube Assembly (#45) using two Lower Pivot Bushings (#39), two 3/4" x 6" Hex Head Bolts (#7) and two 3/4" Nylon Insert Locknuts (#17). Attach the Swing Arms (#41) to the Auto-Level Mounting Tube (#32) using two Upper Pivot Bushing (#33), two 3/4" x 5" Hex Head Bolts (#10) and two 3/4" Nylon Insert Locknuts (#17).
5. Slide the Compression Spring (#11) over the tubing on the Spring Housing (#27). Insert the Spring Shaft (#29) through the tubing on the Spring Housing and secure with one Compression Spring Cap (#30), one 3/4" Hex Nut (#3), and one 3/4" Jam Nut (#20). Repeat for other spring assembly. Tighten until 3-1/4" thread exposed above jam nut
6. Mount the spring assembly to the "A" Frame Assembly (#46) using one Spacer Bushing (#28), one 1/2" x 6" Hex Head Bolt (#4) and one 1/2" Nylon Insert Locknut (#9). Repeat for other spring assembly.
7. Attach the Wear Strips (#19) to the Left (#42) and Right (#43) Boom Mounting Plates using four 1/4" x 1" Slotted Flat Head Screw (#26) and four 1/4" Nylon Insert Locknuts (#14). Mount the Joint Brackets (#31) to the Left (#42) and Right (#43) Boom Mounting Plates using four 3/8" x 1-1/4" Hex Head Bolts (#6), four 3/8" Flatwashers (#1), and four 3/8" Nylon Insert Locknuts (#12). Do not tighten these bolts at this time.
8. Mount the Left and Right Boom Mounting Assemblies to the Auto-Level Mounting Tube (#32) using four 1/2" x 2" Hex Head Bolts (#8), and 1/2" Nylon Insert Locknuts (#9). Tighten the 3/8" bolts and nuts mounting the Joint Bracket at this time.
9. Mount the Adjustable Joint Bracket (#40) to Center Tube Assembly (#45) using eight 1/2" x 1-3/4" Hex Head Bolts (#5), eight 1/2" Flatwashers (#22) and eight 1/2" Nylon Insert Locknuts (#9). Do not Tighten these bolts at this time.
10. Drain oil and install correct fittings in hydraulic cylinders and attach the Hydraulic Cylinders to the Center Tube Assembly (#45) using two Cylinder Pins (#35) and four Cotter Pins (#2).
11. Attach the Tip Tube Mounting Plates (#34) to the Center Tube Assembly (#45) using three 3/8" Square U-Bolts (#23) and six 3/8" Nylon Insert Locknuts (#12). Mount Tube Mounting Plate 12" from end. Mount the Tip Tube (#44) using three 5/16" Square U-Bolts (#25) and six 5/16" Nylon Insert Locknuts (#15).
12. **IF REQUIRED-** Attach 3-way valve mounting plate(#36) to auto level mounting tube(#32) with 3/8" x 3" sq. U-bolt (#13). Attach 3-way control valve to plate (#36) with two 1/4" x 2" bolt, flat washer and lock nut (Valve stamped 2 should face the back of unit).

ASSEMBLY

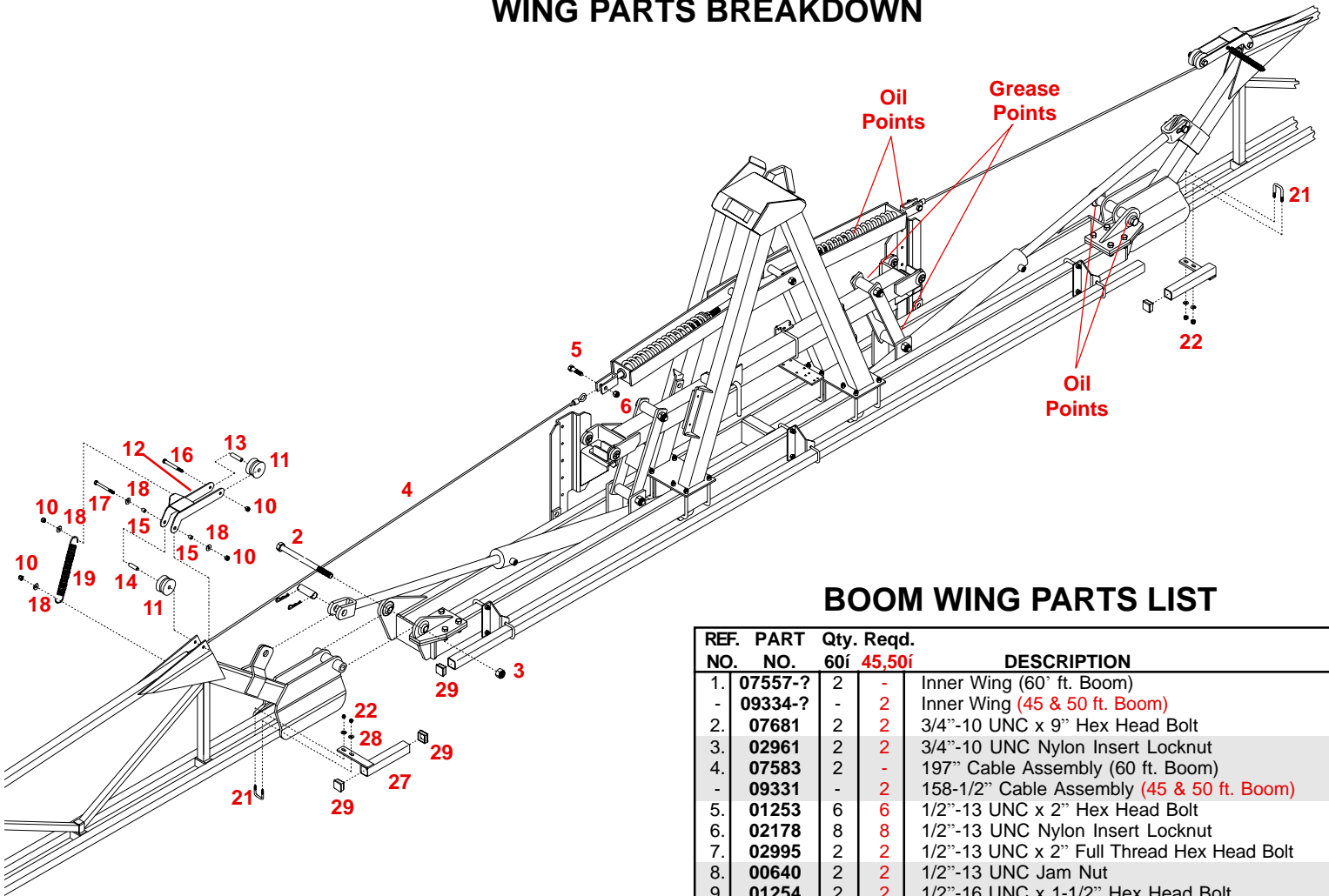
Center Section Assembly must be completed and secured to preferred vehicle before proceeding.

1. Attach the Inner Wing Assembly (#1) to the Adjustable Inner Joint Bracket and Center Section using a 3/4" x 9" Hex Head Bolt (#2) and 3/4" Locknut (#3). Position left wing assembly approximately 1" ahead of center and right wing assembly 1" behind center. Tighten bolts on inner joint bracket (final adjustment will be needed to be made when boom is folded).
2. String the Cable (#4) through the top tube of the Inner Wing (#1). Mount the Cable Sheave (#11) to the outer end of wing using a Stainless Steel Bushing (#14), 3/8" x 2-3/4" Hex Head Bolt (#16) and 3/8" Locknut (#10). **(Do Not Overtighten)**
3. Thread 1/2" jam nut (#8) onto 1/2" x 2" full thread bolt (#7) in end of inner wing (Final Adjustment To Be Made Later).
4. Mount the Outer Wing (#42) with the preassembled Breakaway to the Inner Wing (#1) using two 1/2" x 2" Hex Head Bolts (#5) and 1/2" Locknuts (#6). Attach the Cable to the Breakaway Assembly using 1/2" x 1-1/2" Hex Head Bolt (#9) and 1/2" Locknut (#10). **(Do not overtighten. Cable must be able to swivel)**
5. Mount Cable Tensioner (#12) and Cable Sheave (#11) to the Inner Wing using Stainless Steel Bushings (#14 & #15), 3/8" x 3-1/2" Hex Head Bolt (#17), 3/8" Flatwashers (#18) and 3/8" locknut (#10). Mount the Cable Sheave (#11) to the Cable Tensioner (#12) using a Stainless Steel Bushing (#13), 3/8" x 2-1/4" Hex Head Bolt (#16) and 3/8" Locknut (#10).
6. Attach the Cable Tensioner Spring (#19) to the Cable Tensioner and Inner Wing. Secure with a 3/8" Flatwasher (#18) and 3/8" Locknut (#10).
7. Attach the Outer Wing Storage Bracket (#25) approximately 66" from outer end using two 1/4" x 2-1/4" Hex Head Bolts (#26) and 1/4" Locknuts (#24). Attach the Inner Wing Storage Bracket (#20) approximately 79" from outer hinge point using one 1/4" x 3/4" Hex Head Bolt (#23), one 1/4" Locknut (#24), two 5/16" Square U-Bolts (#21) and four 5/16" Locknuts (#22). These two storage brackets (#20 & #25) must fit together.
8. Install hydraulic hoses and fittings (see page 22). (Bleed air)
9. Extend the hydraulic cylinder and secure the rod end clevis to the Inner Wing using the cylinder pin (#21, page 12) and #9 Cotter Pin (#2, page 12).
10. Secure other end of Cable (#4) to Spring Assembly on Center Section using a 1/2" x 2 Hex Head Bolt (#5) and 1/2" Locknut (#6).
11. Adjust the levelness of the outer wing by adjusting the 1/2" x 2" Full Threaded Hex Head Bolt (#7) and 1/2" Jam Nut (#8).
12. Mount the Tip Offset Bracket (#27) using one 5/16" Square U-Bolt (#21), two 5/16" flatwashers (#28) and two 5/16" locknuts (#22). Fold wing into transport position loosen bolts on adjustable inner joint bracket for adjustment in storage bracket. Retighten bolts.
13. Install plastic caps (#29) in the ends of boom nozzle tubes. Repeat for opposite side.

Note: See Next page for Break Away Hinge Parts Identification



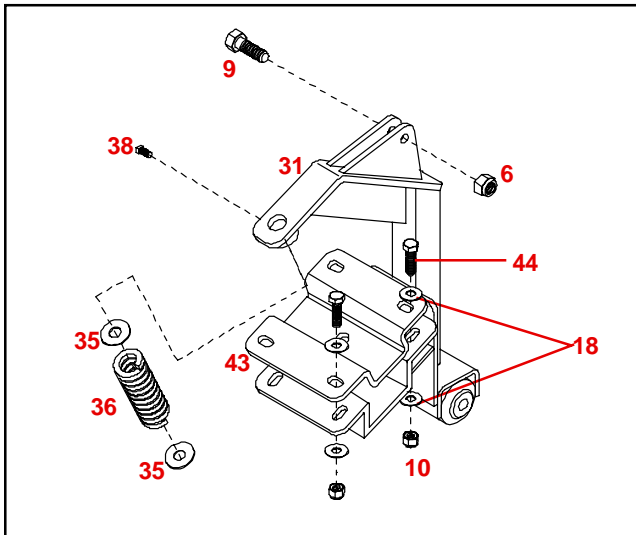
WING PARTS BREAKDOWN



BOOM WING PARTS LIST

REF. NO.	PART NO.	Qty. Req.	60i	45,50i	DESCRIPTION
1.	07557-?	2	-	-	Inner Wing (60" ft. Boom)
-	09334-?	-	2	2	Inner Wing (45 & 50 ft. Boom)
2.	07681	2	2	2	3/4"-10 UNC x 9" Hex Head Bolt
3.	02961	2	2	2	3/4"-10 UNC Nylon Insert Locknut
4.	07583	2	-	-	197" Cable Assembly (60 ft. Boom)
-	09331	-	2	2	158-1/2" Cable Assembly (45 & 50 ft. Boom)
5.	01253	6	6	6	1/2"-13 UNC x 2" Hex Head Bolt
6.	02178	8	8	8	1/2"-13 UNC Nylon Insert Locknut
7.	02995	2	2	2	1/2"-13 UNC x 2" Full Thread Hex Head Bolt
8.	00640	2	2	2	1/2"-13 UNC Jam Nut
9.	01254	2	2	2	1/2"-16 UNC x 1-1/2" Hex Head Bolt
10.	02592	18	18	18	3/8"-16 UNC Nylon Insert Locknut
11.	06807	6	6	6	Cable Sheave
12.	07563-30	2	2	2	Cable Tensioner
13.	07562	2	2	2	1-15/16" Long Stainless Steel Spacer Bushing
14.	07561	4	4	4	1-1/2" Long Stainless Steel Spacer Bushing
15.	05449	4	4	4	.410" Long Stainless Steel Spacer Bushing
16.	02166	4	4	4	3/8"-16 UNC x 2-3/4" Hex Head Bolt
17.	01903	2	2	2	3/8"-16 UNC x 3-1/2" Hex Head Bolt
18.	00059	24	24	24	3/8" Flatwasher
19.	07580	2	2	2	Cable Tensioner Spring
20.	07564-30	4	4	4	Inner Wing Boom Rest
21.	05678	6	8	8	5/16"-18 UNC x 1-1/2"x 2-1/4" Sq. U-Bolt
22.	02802	12	16	16	5/16"-18 UNC Nylon Insert Locknut
23.	01076	2	2	2	1/4"-20 UNC x 3/4" Hex Head Bolt
24.	02772	6	6	6	1/4"-20 UNC Nylon Insert locknut
25.	07565-30	2	2	2	Outer Wing Boom Rest
26.	07682	4	4	4	1/4"-20 UNC x 2-1/4" Hex Head Bolt
27.	07579-30	2	4	4	Offset Tip Bracket
28.	00004	4	8	8	5/16" Flatwasher
29.	03159	8	12	12	1-1/2" Square Cap Plug
30.	09338-30	-	2	2	Boom Extension (50 ft. Boom Only)(Not Shown)
31.	09336-30	1	1	1	Breakaway Hinge
32.	00477	2	2	2	5/8" Flatwasher
33.	07559-95	1	1	1	Breakaway Pin
34.	32CS	1	1	1	1" OD x 3/4" ID x 1/2" Long Spacer Bushing
35.	00085	2	2	2	1/2" Flatwasher
36.	03417-51	1	-	-	Breakaway Spring (60 ft. Boom)
-	05318-30	-	1	1	Breakaway Spring (45 & 50 ft. Boom)
37.	07560-95	1	1	1	Breakaway Slide Tube
38.	00091	1	1	1	5/16"-18 UNC x 1/2" Square Head Set Screw
39.	07134	2	2	2	Breakaway Roller
40.	02562-95	2	2	2	1" OD x 5/8" ID x 11/16" Long Spacer Bushing
41.	04051	2	2	2	5/8"-11 UNC x 1-1/2" Hex Head Bolt
42.	07556-?	1	-	-	Outer Wing (60 ft. Boom)
-	09335-?	-	1	1	Outer Wing (45 & 50 ft. Boom)
43.	07994-30	1	1	1	Breakaway Plate
44.	00523	4	4	4	3/8"-16 UNC x 1-1/4" Hex Bolt

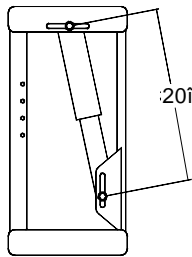
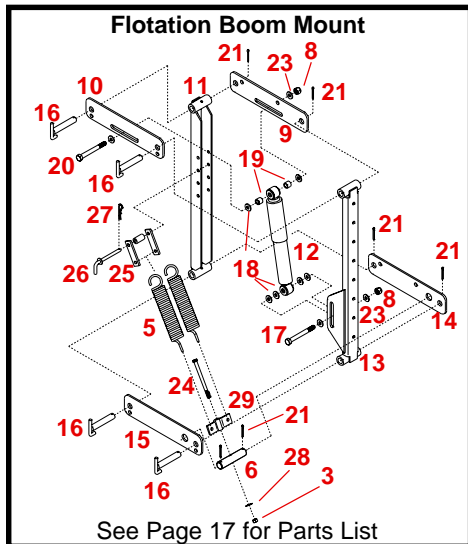
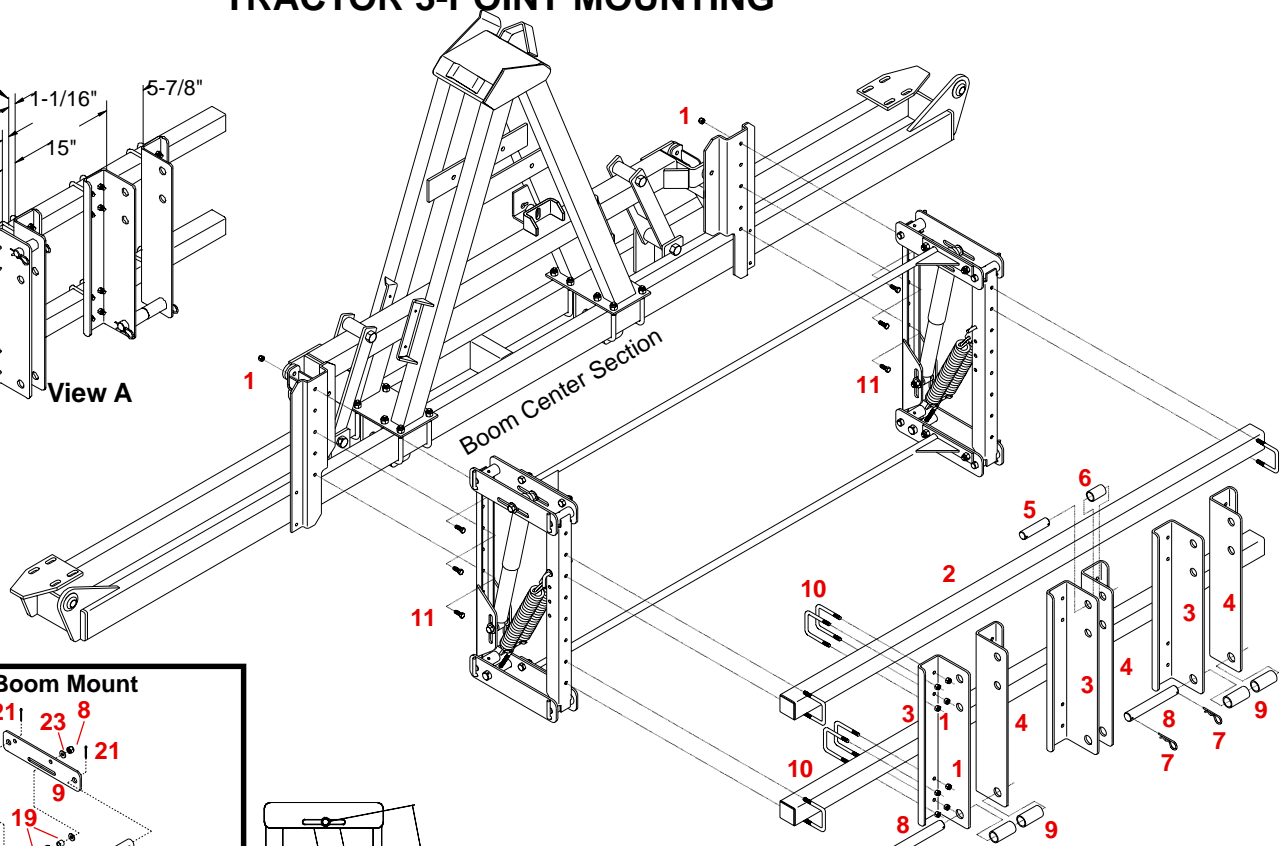
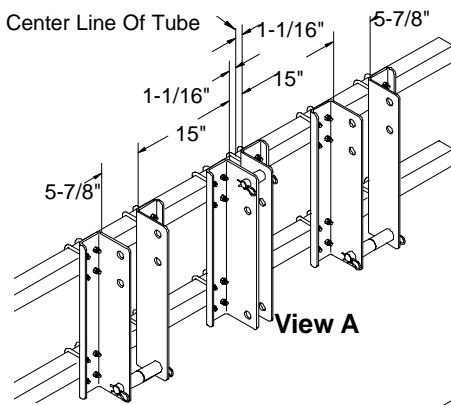
BREAK AWAY HINGE



?=10 (Red)
20 (Green)

Please order replacement parts by PART NO. and DESCRIPTION.

TRACTOR 3-POINT MOUNTING



Please order replacement parts by
PART NO. and DESCRIPTION

3-POINT PARTS LIST

REF. NO.	PART NO.	QTY. REQD.	DESCRIPTION
1.	02592	64	3/8" Nylon Insert Locknut
2.	09602-30	2	Boom Mounting Tube
3.	05676-30	3	Right Mounting Bracket
4.	05675-30	3	Left Mounting Bracket
5.	00332-95	1	1" dia. x 4" lg. Lift Pin
6.	05383-95	1	1-1/4" OD X 1" ID X 1-5/16"lg. bushing (Cat III only)
7.	00006	6	5/32" Hair Pin (#9)
8.	05382-95	2	1-1/8" dia. x 7-3/4" lg. Lift Pin
9.	00328-95	4	1-7/16" O.D x 1-3/16" I.D x 2-7/8" lg. Bushing
10.	01887	28	3/8" x 2-1/2" x 3-5/16" Square U-bolt
11.	00523	8	3/8"-16 UNC x 1-1/4" Hex Head Bolt Gr 5

FLOTATION BOOM MOUNT INSTRUCTIONS

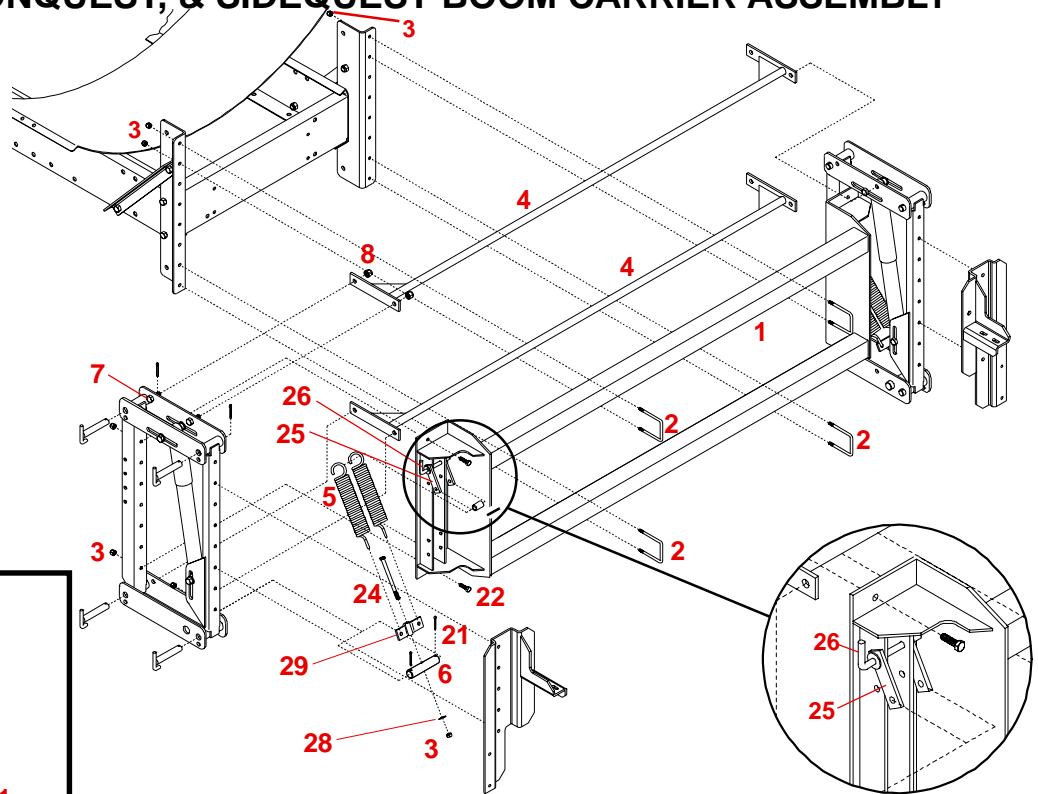
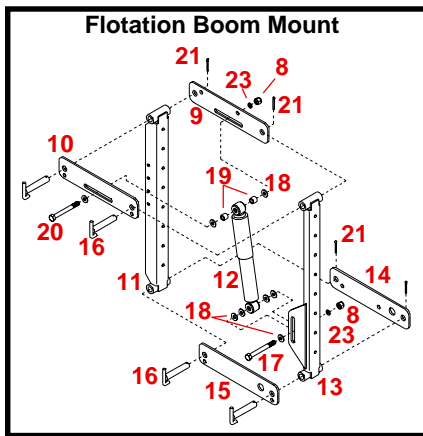
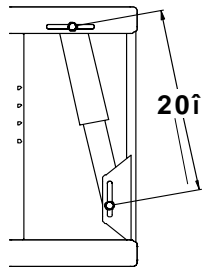
- Begin by connecting the upper plate (#10) and upper torsion plate (#9) to the front carrier channel (#11) and the rear floating channel (#13) using the connecting pins (#16).
- Use cotter pin (#21) to retain the connecting pins.
- Bolt the shock absorber (#12) to the rear floating channel (#13) as shown using the 1/2" x 3-1/2" bolt (#17), six 1/2" flatwashers (#18) and 1/2" nylon insert locknut (#8).
- Fasten the shock absorber to the upper plates using the two shock spacers (#19), 1/2" x 4-1/2" bolt (#20), four 1/2" flatwashers (#18), and 1/2" hex locknut (#8).
- Connect the lower plate (#15) and lower torsion plate (#14) to the front carrier channel (#11) and the rear channel (#13) using the connecting pins (#16). **NOTE: The lower plates are not both the same and must be installed as shown for left-hand assembly (opposite for right side).**
- Slide the spring anchor pin (#6) through the hole in the lower plates (#13 & 14), using cotter pins (#21) to retain the spring anchor pin.
- Connect mounting plates (#25) to the front carrier channel (#11) with pin (#26) and secure it with hair pin.
- Hook one end of the springs (#5) to the mounting plates (#25) and the other end through the tension bolt (#24) and insert it through the spring anchor pin (#6) and fasten with a 3/8" flatwasher and 3/8" locknut.

3-POINT ASSEMBLY INSTRUCTIONS

- Assemble center section (page 17) before continuing. Then mount the assembled DBFT to the boom mounting brackets. Attach the boom carrier tubes (#2) with the 3/8" x 2-1/2" x 3-5/16" square U-bolts (#10) and 3/8" lock nuts (#1).
- Fasten right and left lift brackets (#3) and (#4) to the boom carrier tubes (#2) with the 3/8" x 2-1/2" x 3-5/16" square U-bolts (#10) and 3/8" lock nuts (#1). **NOTE:** Position one set on each end and in the center of the boom mounting tubes (#2), do not tighten bolts at this time. See above **View A** for dimensions for mounting the brackets.
- Connect the tractors center stabilizer arm to the center lift brackets by inserting lift pin (#5) through center lift bracket (#3), (Cat.II will require bushing (#6)), tractor center lift arm and center lift bracket (#4). Insert hair pin (#7) through both ends of lift pin (#5). Tighten all bolts for center lift brackets.
- Adjust the outside lift arm brackets in or out to properly fit your tractor.
- Connect the tractors outside lift arms to the lift brackets by inserting lift pin (#8) through lift bracket (#3), bushing (#9), tractor lift arm and lift bracket (#4). Insert a hair pin (#7) through both ends of lift pin (#8). Tighten all bolts.

TRAILER, CONQUEST, & SIDEQUEST BOOM CARRIER ASSEMBLY

Standard sprayer frame, without Height Adjuster shown.



ASSEMBLY INSTRUCTIONS

1. Attach the Front Carrier Channel (#11) to each end of the Boom Carrier (#1), using eight 3/8" x 1-1/4" bolts (#22), eight 3/8" flat washers (#28) and eight 3/8" locknuts (#3). **Do Not Tighten.**
2. Begin by connecting the upper plate (#10) and upper torsion plate (#9) to the front carrier channel (#11) and the rear floating channel (#13) using the connecting pins (#16). Use cotter pin (#21) to retain

the connecting pins. **NOTE: The upper plates are not both the same and must be installed as shown for left-hand assembly (opposite for right side).**

3. Connect the lower plate (#15) and lower torsion plate (#14) to the front carrier channel (#11) and the rear channel (#13) using the connecting pins (#16). **NOTE: The lower plates are not both the same and must be installed as shown for left-hand assembly (opposite for right side).**
4. Slide the spring anchor pin (#6) through the hole in the lower plates (#14 & 15), using cotter pins (#21) to retain the spring anchor pin.
5. Hook one end of the springs (#5) to the mounting plates (#25) and the other end to the tension bolt plate (#29) using the tension bolt (#24) and insert it through the spring anchor pin (#6) and fasten with a 3/8" flatwasher and 3/8" locknut.
6. Connect spring mounting plates (#25) to the outside of front carrier channel (#11) with pin (#26) and secure it with hair pin.
7. Bolt the shock absorber (#12) to the rear floating channel (#13) as shown using the 1/2" x 3-1/2" bolt (#17), six 1/2" flatwashers (#18) and 1/2" nylon insert locknut (#8).
8. Fasten the shock absorber to the upper plates using the two shock spacers (#19), 1/2" x 4-1/2" bolt (#20), four 1/2" flatwashers (#18), and 1/2" hex locknut (#8).
9. Mount the Torsion Bars (#4) to the Flotation Boom Mounts on both sides, top and bottom using eight 1/2" x 1-1/4" (#7) bolts and eight 1/2" locknuts (#8) as shown.

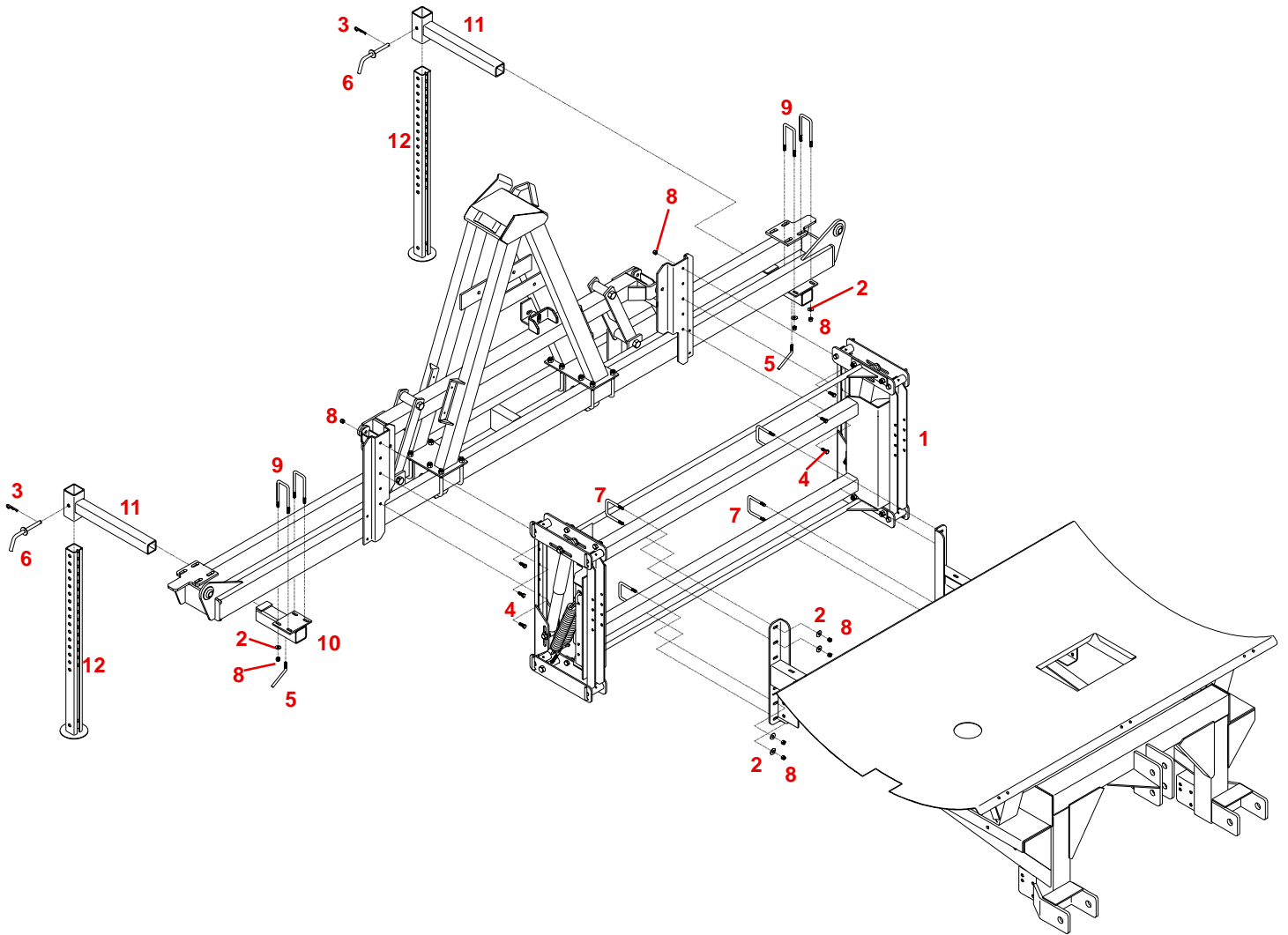
10. Center flotation boom mount on boom carriers and tighten bolts.

PARTS LIST

REF. NO.	PART NO.	QTY.	DESCRIPTION
1.	03844-?	1	Boom Carrier (?=10 Red, 20 Green)
2.	01887	4	3/8"-16 UNC x 2-1/2" U-bolt
3.	02592	12	3/8"-16 UNC Nylon Insert Locknut
4.	00201-30	2	Torsion Bars
5.	07838-51	4	Spring
6.	00198-95	2	Spring Anchor Pin
7.	00967	8	1/2"-13 UNC x 1-1/4" Hex Head Bolt (Gr 5)
8.	02178	12	1/2"-13 UNC Nylon Insert Locknut
9.	00187-30	2	Upper Parallel Torsion Plate
10.	00186-30	2	Upper Parallel Plate
11.	00188-30	2	Front Carrier Channel
12.	00192-30	2	Shock Absorber
13.	00189-30	2	Rear Floating Channel
14.	00197-30	2	Lower Parallel Torsion Plate
15.	00196-30	2	Lower Parallel Plate
16.	00190-95	8	Connecting Pin
17.	01897	2	1/2"-13 UNC x 3-1/2" Hex Head Bolt (Gr 5)
18.	00085	18	1/2" Flatwasher
19.	00193-95	4	Shock Spacers
20.	01338	2	1/2"-13 UNC x 4-1/2" Hex Head Bolt (Gr 5)
21.	00191	12	Cotter Pin
22.	00523	4	3/8"-16 UNC x 1-1/4" Hex Head Bolt (Gr 5)
23.	00084	4	1/2" Lockwasher
24.	00675	2	3/8"-16 UNC x 5" Hex Head Bolt (Gr.5)
25.	02967-95	4	Spring Mounting Plate
26.	00199-95	2	Pin
27.	00182	2	Small Hair Pin (not shown)
28.	00059	2	3/8" Flatwasher
29.	07836-95	2	Tension Bolt Plate

Please order replacement parts by PART NO. and DESCRIPTION.

REAR MOUNT MOUNTING PARTS BREAKDOWN



REAR MOUNT ASSEMBLY INSTRUCTIONS

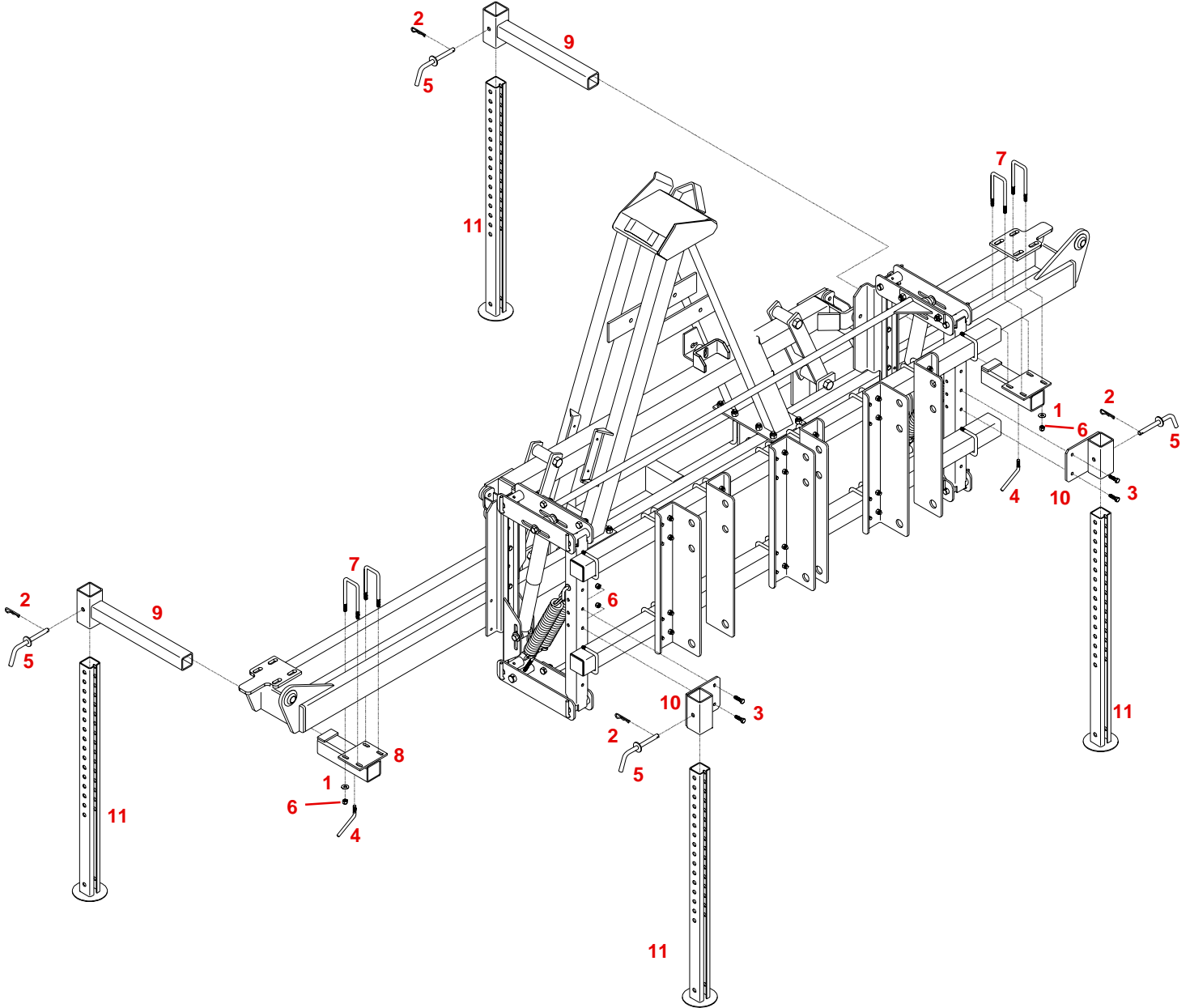
1. Assemble the center section, Flotation boom mount, and the Rear Mount before continuing.
2. Mount the boom floatation/carrier assembly (#1) to the left and right boom mounting brackets with four 3/8" x 2-1/2" x 3-5/16" square U-bolts (#7), eight 3/8" flatwashers (#2) and eight 3/8" lock nuts (#8).
3. Mount the assembled boom center section to the assembled Boom Flotation Mount to the boom carrier tubes with eight 3/8" x 1-1/4" hex head bolts (#4) and eight 3/8" nylon insert locknuts (#8). **NOTE: The center section may need to be supported until the Safety Stands are mounted.**
4. Mount the safety stand assembly to the boom center section as shown.

REAR MOUNT PARTS LIST

REF. PART NO.	QTY. REQD.	DESCRIPTION
1.	-	Boom Flotation/Carrier Assembly
2.	00059	16 3/8" Flatwasher
3.	00182	2 Hair Pin (7 GA)
4.	00523	8 3/8"-16 UNC x 1-1/4" Hex Head Bolt
5.	01404-95	2 Locking Handle
6.	01718-95	2 Lock Pin
7.	01887	4 3/8" x 2-1/2" x 3-5/16" Square U-bolt
8.	02592	24 3/8" Nylon Insert Locknut
9.	05583	4 3/8"-16 UNC x 2-1/8" x 4-7/8" Square U-Bolt
10.	07650-30	2 Receiver Tube
11.	07651-30	2 Rear Insert Tube
12.	07735-30	2 Adjustable Leg

Please order replacement parts by **PART NO.** and **DESCRIPTION**

GROUND STORAGE STANDS FOR 3-POINT MOUNTING



STORAGE STANDS ASSEMBLY INSTRUCTIONS

The Floation Boom Mount and 3-Point Mount must be assembled before proceeding.

1. Mount the Rear Leg Receiver Tube (#8) to the bottom of the Center Tube Assembly using two 3/8" Square U-Bolts (#7), four 3/8" Flatwashers (#1), four 3/8" Locknuts (#6).
2. Mount the Front Leg Receiver Tube (#10) to the DBFT Channels as shown. Note: These must be in the holes directly above the DTB3 mounting bolts. Use two 3/8" x 1-1/4" Hex Head Bolts (#3) and two 3/8" Locknuts (#6).
3. Insert the Rear Insert Tube (#9) and secure using a 3/8" Locking Bolt (#4)
4. Insert the Adjustable Legs (#11) and secure using a Locking Pin (#5) and Hair Pin (#2)

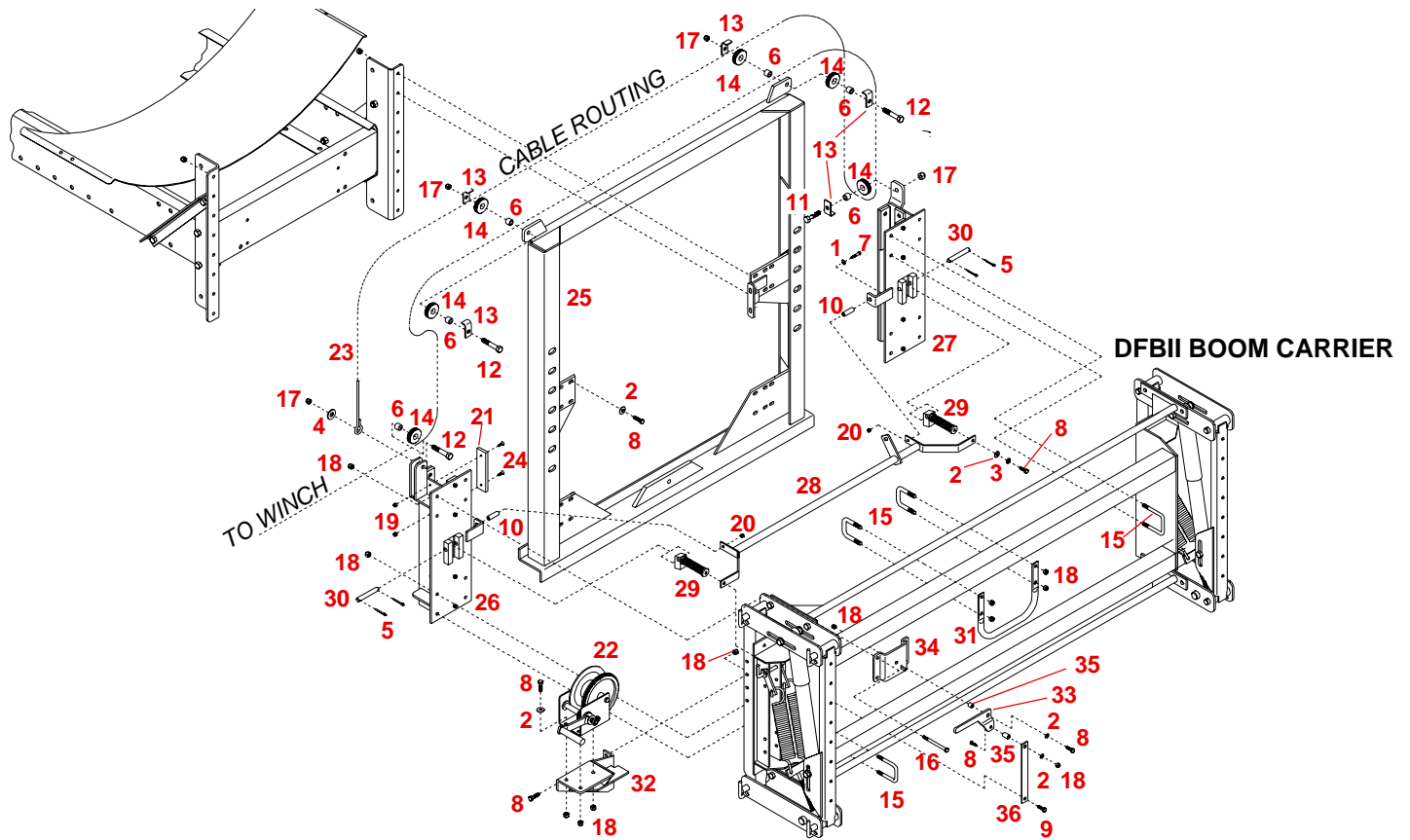
Repeat on other side.

3-POINT GROUND STORAGE PARTS LIST (9488011)

REF. NO.	PART NO.	QTY. REQD.	DESCRIPTION
1.	00059	8	3/8" Flatwasher
2.	00182	4	Hair Pin (7 GA)
3.	00523	4	3/8"-16 UNC x 1-1/4" Hex Head Bolt
4.	01404-95	2	Locking Handle
5.	01718-95	4	Lock Pin
6.	02592	12	3/8"-16 UNC Nylon Insert Locknut
7.	05583	4	3/8"-16 UNC x 2-1/8" x 4-7/8" Square U-bolt
8.	07650-30	2	Rear Leg Receiver Tube
9.	07651-30	2	Rear Insert Tube
10.	07652-30	2	Front Leg Receiver Tube
11.	07735-30	4	Adjustable Leg

Please order replacement parts by **PART NO.** and **DESCRIPTION.**

MOUNTING THE DBFT BOOM CARRIER WITH MANUAL HEIGHT ADJUST



ASSEMBLY INSTRUCTIONS

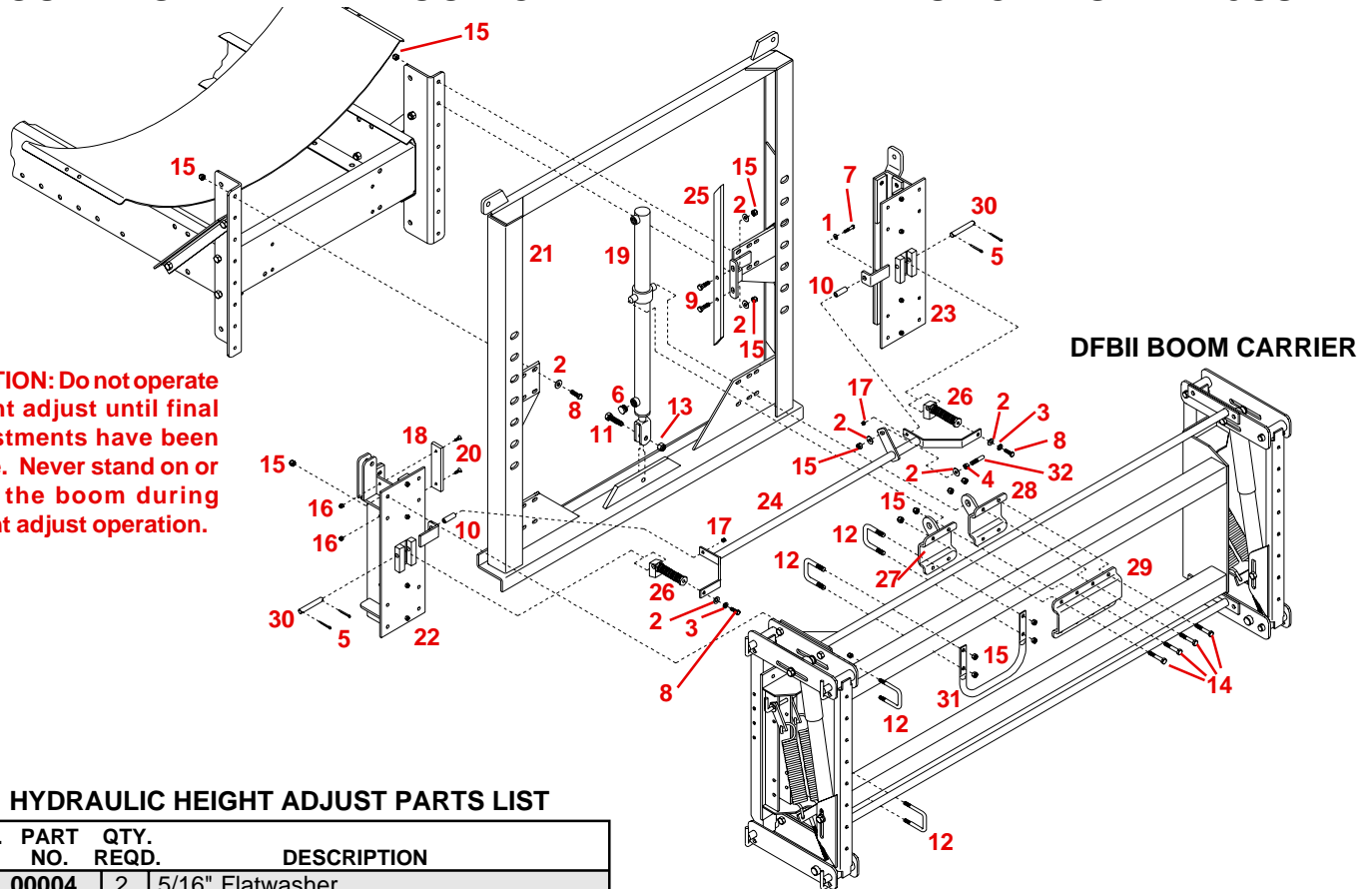
MANUAL HEIGHT ADJUST PARTS LIST

- Mount the height adjust frame (#25) to the boom mounting brackets on sprayer frame (not shown) using eight 3/8" x 1-1/4" bolts, eight 3/8" flatwashers, and eight 3/8" locknuts. Note: The mounting brackets may need to be turned in or out depending on sprayer frame width.
- Attach twelve UHMW strips (#21) to the left and right slide brackets (#26 & #27) using twenty-four 1/4" x 1" slotted head screws (#24), and twenty-four 1/4" locknuts (#19).
- On the right slider bracket attach pulley (#14) using spacer (#6), cable retainer bracket (#13), 1/2" x 2-1/2" bolt (#12), and 1/2" locknut (#17). Slide left and right slider brackets (#26 & #27) onto the mainframe (#25). Next install both latches (#29) onto slider brackets using pins (#30), and four cotter pins (#5). Slide each slider bracket up until latches fall into first slot (be sure both latches are in the same slot on each upright).
- Attach the latch actuator (#28) to the slider brackets using two 5/16" x 1-1/2" bolts (#7), two bushings (#10), two 5/16" flatwashers (#1), and two 5/16" locknuts (#20). Attach DFBII boom carrier to the slider brackets using six 3/8" x 2-1/2" Sq. U-bolts (#15), and twelve 3/8" locknuts (#18).
- Mount the manual latch handle (#33) to the manual latch plate (#34), and the link strip (#36) using two 3/8" x 1-1/4" bolts (#8), two bushings (#35), three 3/8" flatwashers (#2), and two 3/8" locknuts (#18). Install this assembly to the boom carrier and left slider plate (#26) using four 3/8" x 3-1/2" bolts (#16), and four 3/8" locknuts (#18). Now insert a 3/8" x 1-3/4" bolt (#9) thru the link strip (#36) and latch actuator (#28) to the left latch (#29). On the right use a 3/8" x 1-1/4" bolt (#8) thru the latch actuator (#28) to the right latch (#29).
- Mount the hose keeper (#31) to the upper tube of the DFBII boom carrier using two 3/8" x 2-1/2" Sq. U-bolts (#15), and four 3/8" locknuts (#18). Attach winch mount (#32) to the winch (#22) and the DBFT suspension using six 3/8" x 1-1/4" bolts (#8), three 3/8" flatwashers (#2), and six 3/8" locknuts (#18).
- Mount four pulleys (#14) on the top of the the mainframe (#25) using two 1/2" x 2-1/2" bolts (#12), two spacers (#6), four cable retainer brackets (#13), and two 1/2" locknuts (#17). On the left slider bracket attach pulley (#14), and cable assembly (#23) using spacer (#6), 1/2" x 2-1/2" bolt (#12), 1/2" flatwasher (#4), and 1/2" locknut (#17).
- Route cable as shown and fasten to winch.

REF. NO.	PART NO.	QTY. REQD.	DESCRIPTION
1.	00004	2	5/16" Flatwasher
2.	00059	13	3/8" Flatwasher
3.	00060	2	3/8" Lock washer
4.	00085	1	1/2" Flatwasher
5.	00185	4	Cotter Pin 5/32" x 1"
6.	00193-95	6	Spacer
7.	00372	2	5/16"-18 UNC x 1-1/2" Hex Head Bolt
8.	00523	18	3/8"-16 UNC x 1-1/4" Hex Head Bolt
9.	00908	1	3/8"-16 UNC x 1-3/4" Hex Head Bolt
10.	01212-95	2	Bushing 1/2" O.D. x 5/16" I.D. x 5/8" Lg.
11.	01253	1	1/2"-13 UNC x 2" Hex Head Bolt
12.	01264	3	1/2"-13 UNC x 2-1/2" Hex Head Bolt
13.	01838-95	5	Cable Retainer Bracket
14.	01840-95	6	Pulley
15.	01887	8	3/8"-16 UNC x 2-1/2" Sq. U-bolt
16.	01903	6	3/8"-16 UNC x 3-1/2" Hex Head Bolt
17.	02178	4	1/2"-13 UNC Nylon Insert Locknut
18.	02592	38	3/8"-16 UNC Nylon Insert Locknut
19.	02772	24	1/4"-20 UNC Nylon Insert Locknut
20.	02802	2	5/16"-18 UNC Nylon Insert Locknut
21.	03324	12	UHMW Strip
22.	04967	1	Winch
23.	05611	1	20' Cable Assembly
24.	05732	24	1/4"-20 UNC x 1" Slotted Flat Head
25.	07841-30	1	Frame
26.	07842-30	1	Left Slide Bracket
27.	07843-30	1	Right Slide Bracket
28.	07844-30	1	Latch Actuator
29.	07846-30	2	Latch
30.	07851-95	2	Latch Pin
31.	07852-30	1	Hose Keeper
32.	07916-30	1	Winch Mount
33.	07917-95	1	Manual Latch
34.	07918-30	1	Manual Latch Plate
35.	07919-95	2	Bushing 1/2" O.D x 18 Ga. WL. x 5/16" Lg.
36.	07920-95	1	Link Strip

Please order replacement parts by **PART NO.** and **DESCRIPTION.**

MOUNTING THE DBFT BOOM CARRIER WITH HYDRAULIC HEIGHT ADJUST



CAUTION: Do not operate height adjust until final adjustments have been made. Never stand on or near the boom during height adjust operation.

HYDRAULIC HEIGHT ADJUST PARTS LIST

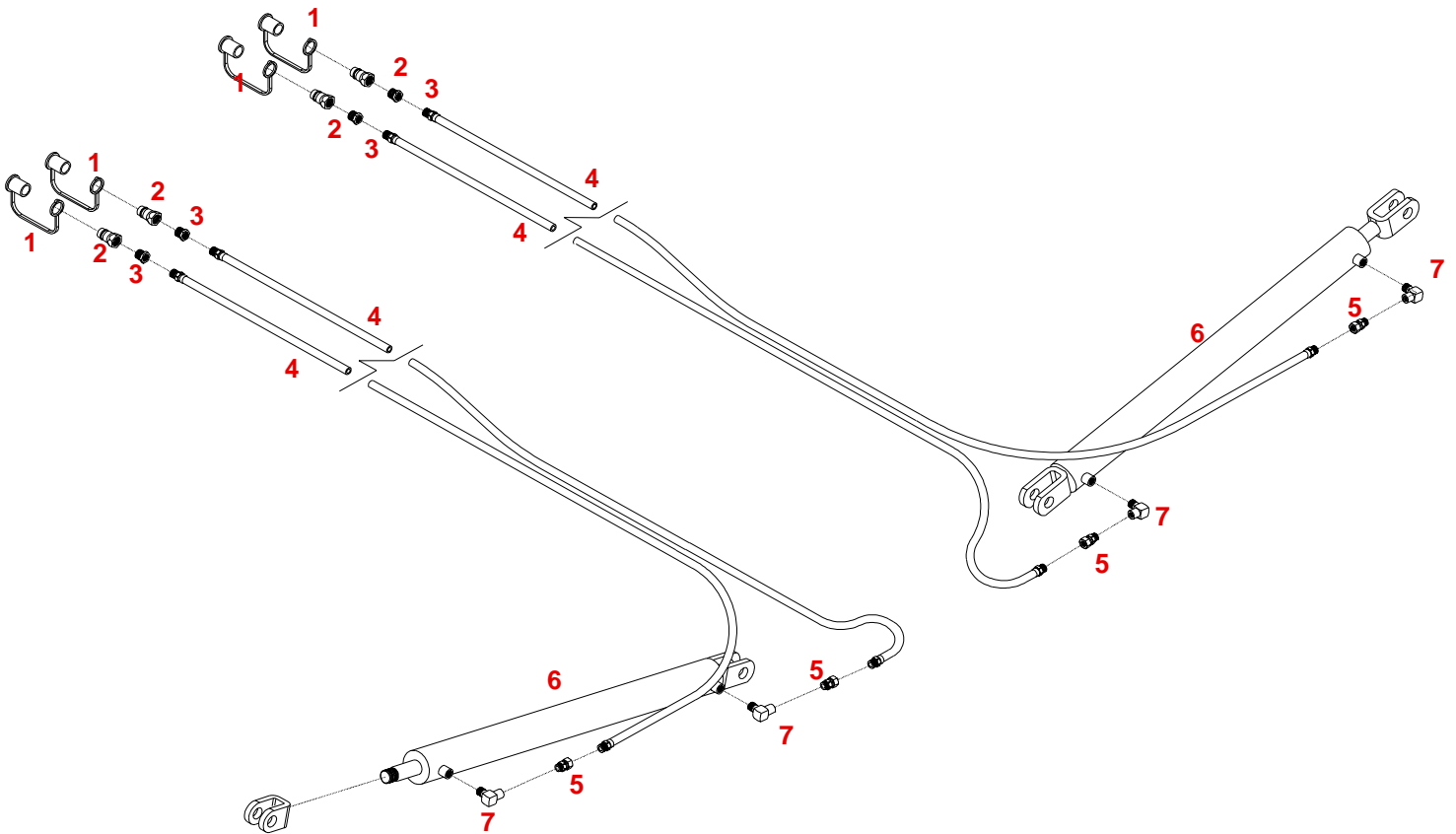
REF. NO.	PART NO.	QTY. REQD.	DESCRIPTION
1.	00004	2	5/16" Flatwasher
2.	00059	12	3/8" Flatwasher
3.	00060	2	3/8" Lock Washer
4.	00061	1	3/8"-16 UNC Hex Nut
5.	00185	4	Cotter Pin
6.	00288	1	Air Vent - Hydraulic Cylinder
7.	00372	2	5/16"-18 UNC x 1-1/2" Hex Head Bolt
8.	00523	10	3/8"-16 UNC x 1-1/4" Hex Head Bolt
9.	00914	2	3/8"-16 UNC x 1-1/2" Hex Head Bolt
10.	01212-95	2	Bushing 1/2" O.D. x 5/16" I.D. x 5/8" Lg.
11.	01253	1	1/2"-13 UNC x 2" Hex Head Bolt
12.	01887	6	3/8"-16 UNC x 2-1/2" Sq. U-bolt
13.	02178	1	1/2"-13 UNC Nylon Insert Locknut
14.	02494	8	3/8"-16 UNC x 2-1/4" Hex Head Bolt
15.	02592	31	3/8"-16 UNC Nylon Insert Locknut
16.	02772	24	1/4"-20 UNC Nylon Insert Locknut
17.	02802	2	5/16"-18 UNC Nylon Insert Locknut
18.	03324	12	UHMW Strip
19.	05600-30	1	Cylinder
20.	05732	24	1/4"-20 UNC x 1" Slotted Flat Head Screw
21.	07841-30	1	Frame
22.	07842-30	1	Left Slide Bracket
23.	07843-30	1	Right Slide Bracket
24.	07844-30	1	Latch Actuator
25.	07845-30	1	Slide Bar
26.	07846-30	2	Latch Assembly
27.	07848-30	1	Left Cylinder Mount
28.	07849-30	1	Right Cylinder Mount
29.	07850-30	1	Cylinder Mount Backup Plate
30.	07851-95	2	Latch Pin
31.	07852-30	1	Hose Keeper
32.	07854-95	1	Slide Guide Stud
-	5222	-	Cylinder Repair Kit

Please order replacement parts by **PART NO.** and **DESCRIPTION.**

ASSEMBLY INSTRUCTIONS

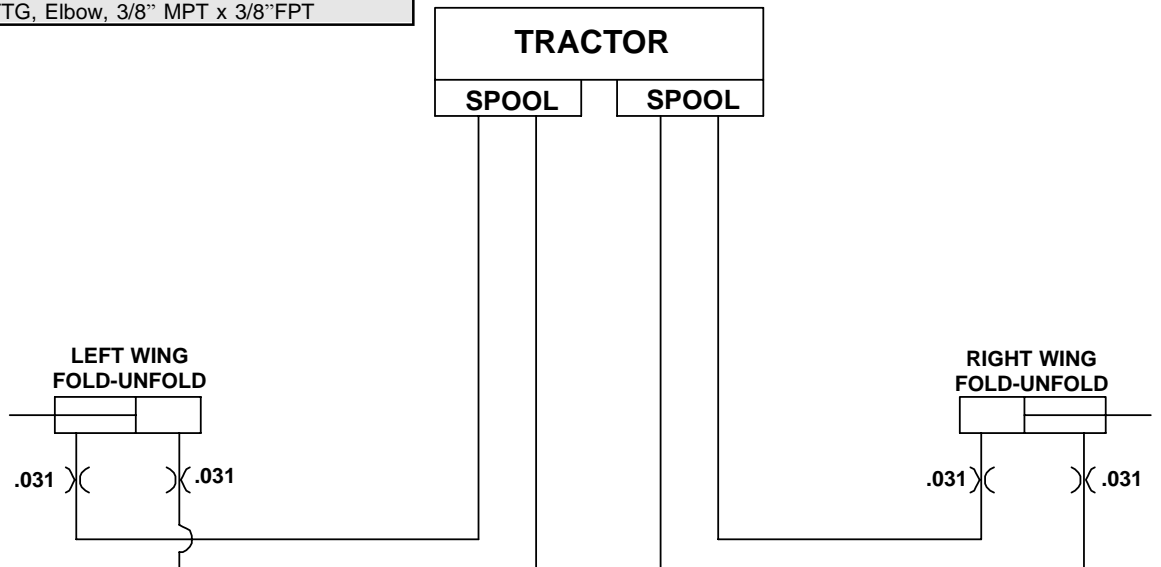
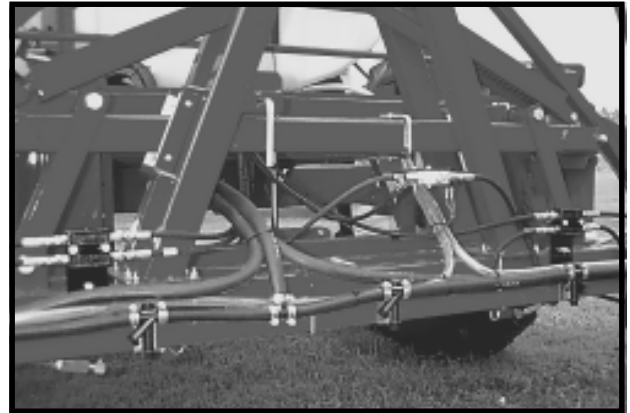
- Mount the height adjust frame (#21) to the boom mounting brackets on sprayer frame (not shown) using eight 3/8" x 1-1/4" bolts, eight 3/8" flatwashers, and eight 3/8" locknuts.
- Attach twelve UHMW plastic strips (#18) to the left and right slide brackets (#22 & #23) using twenty-four 1/4" x 1" slotted head screws (#20), and twenty-four 1/4" locknuts (#16). **Do Not Overtighten.**
- Install both latches (#26) onto slider brackets using pins (#30), and four cotter pins (#5). Slide left and right slider brackets (#22 & #23) onto the mainframe (#21). Slide each slider bracket up until latches fall into first slot (be sure both latches are in the same slot on each upright). C-clamp into position.
- Attach the latch actuator (#24) to the slider brackets using two 5/16" x 1-1/2" bolts (#7), two bushings (#10), two 5/16" flatwashers (#1), and two 5/16" locknuts (#17). Attach DFBII boom carrier to the slider brackets using eight 3/8" x 2-1/2" Sq. U-bolts (#12), and sixteen 3/8" locknuts (#15).
- Attach latch actuator (#24) to latches using two 3/8" x 1-1/4" bolts (#8), two lock washers (#3) and two 3/8" flatwashers (#2). Mount slide bar (#25), in high position, to frame (#21) using two 3/8" x 1-1/2" bolts (#9), two 3/8" flatwashers (#2), and two 3/8" locknuts (#15). Install slide guide stud (#32) to latch actuator (#24) using two flatwashers (#2), one 3/8" hex nut (#4), and one 3/8" locknut (#15) to back of slot. Mount the hose keeper (#31) to the upper tube of the DFBII boom carrier using two 3/8" x 2-1/2" Sq. U-bolts (#12), and four 3/8" locknuts (#15).
- Mount cylinder (#19) to the frame (#21) using 1/2" x 2" bolt (#11), and 1/2" locknut (#13). Attach cylinder to the DFBII boom carrier using left and right cylinder mounts (#27 & #28), and cylinder mount backup plate (#29), eight 3/8" x 2-1/4" bolts (#14), and eight 3/8" locknuts (#15). Mounts should be centered
- Install air vent (#6) to bottom of cylinder with hole down to keep water out.

2 CYLINDER HYDRAULICS

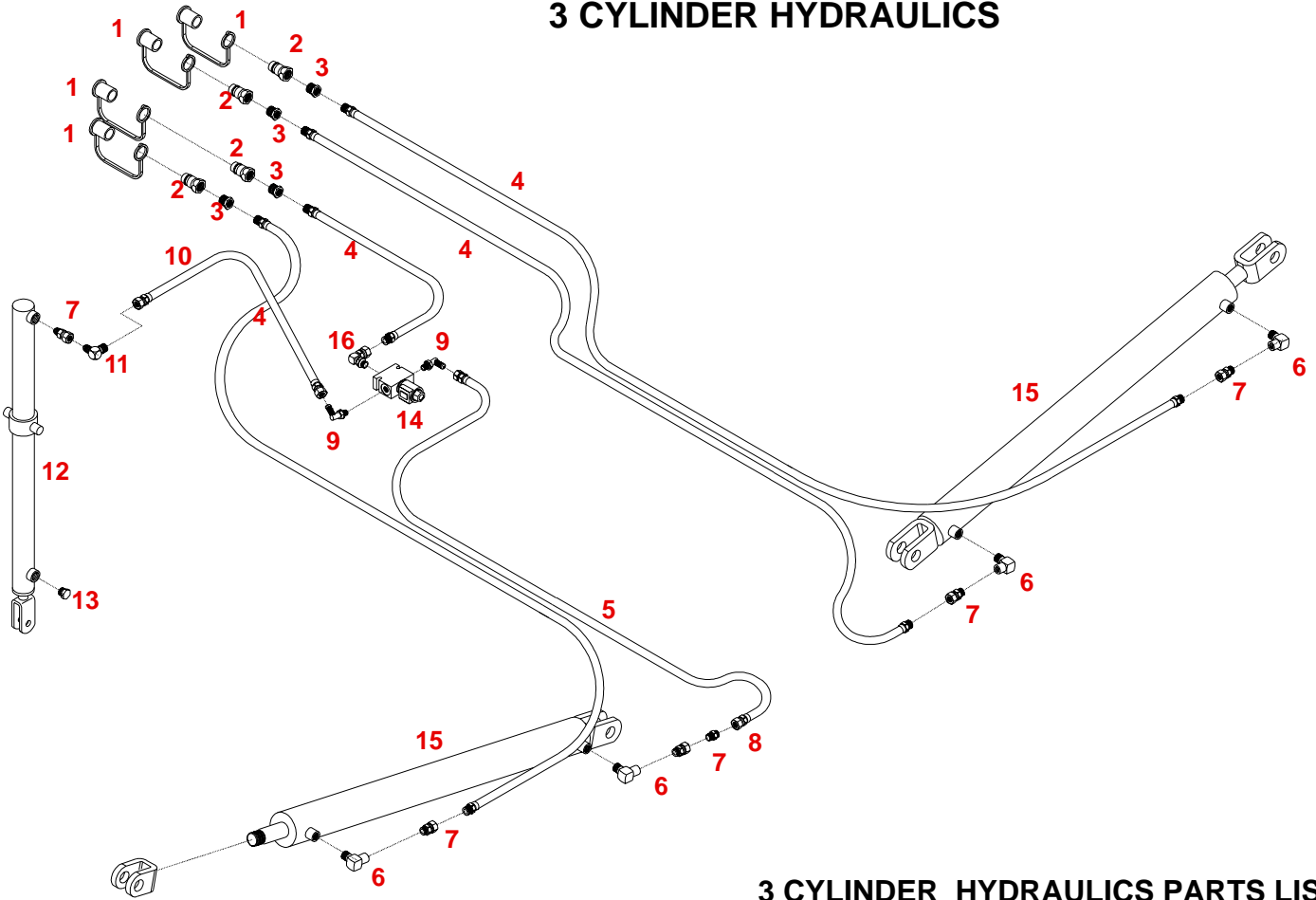


2 CYLINDER HYDRAULICS PARTS LIST

REF NO.	PART NO.	QTY. REQD.	DESCRIPTION
1.	05198	4	Rubber Female Cover for Pioneer Cover
2.	05197	4	Pioneer Coupler
3.	05831	4	.500 MPT x .375 FPT Reducer Bushing
4.	10750	4	1/4" x 142" Hyd. Hose with 3/8" MPT Ends
-	05841	4	1/4" x 264" Hyd. Hose with 3/8" MPT Ends
-	10547	4	1/4" x 384" Hyd. Hose with 3/8" MPT Ends
5.	05661	4	FTG, STR, 3/8" F/MPT .031 Orifice
6.	10197-30	2	2-1/2" x 30" Hydraulic Cylinder
-	5584	-	Cylinder Repair Kit for Cylinder #10197-30
-	03547	4	5/16"-18 UNC Hex Head Bolt (Gr 5)
-	02802	4	5/16"-18 UNC Nylon Insert Locknut
7.	05215	4	FTG, Elbow, 3/8" MPT x 3/8" FPT

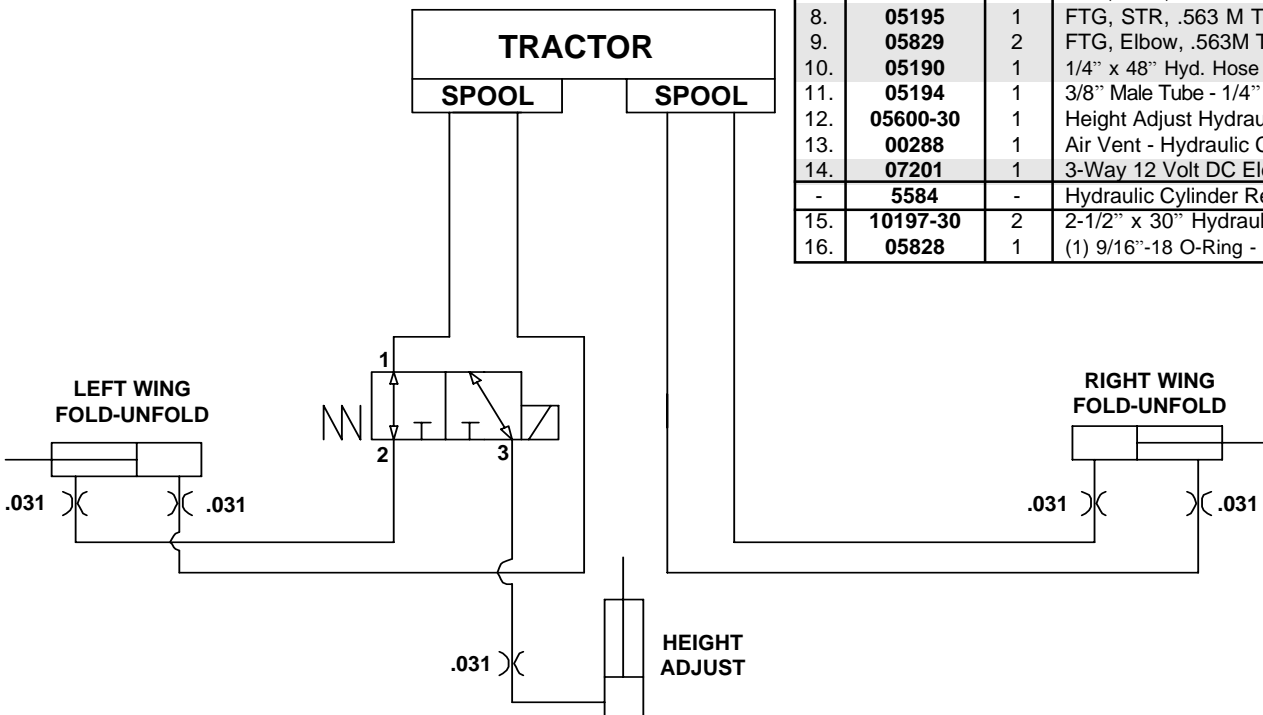


3 CYLINDER HYDRAULICS

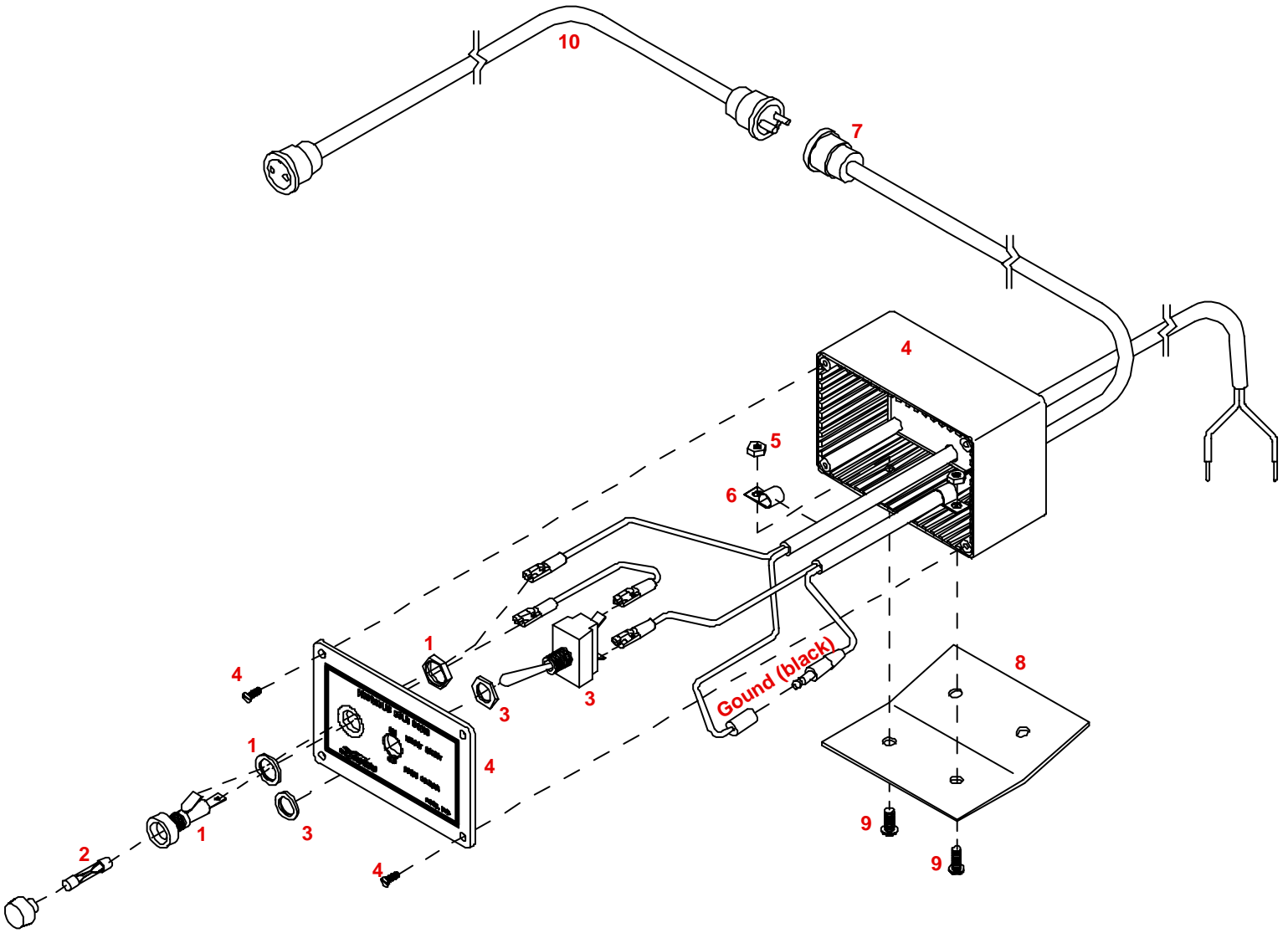


3 CYLINDER HYDRAULICS PARTS LIST

REF NO.	PART NO.	QTY. REQD.	DESCRIPTION
1.	05198	4	Rubber Female Cover for Pioneer Cover
2.	05197	4	Pioneer Coupler
3.	05831	4	.500 MPT x .375 FPT Reducer Bushing
4.	10750	4	1/4" x 142" Hyd. Hose with 3/8" MPT Ends
-	05841	4	1/4" x 264" Hyd. Hose with 3/8" MPT Ends
-	10547	4	1/4" x 384" Hyd. Hose with 3/8" MPT Ends
5.	05192	1	1/4" X 60" Hydraulic Hose
6.	05215	4	FTG, Elbow, 3/8" MPT x 3/8" FPT
7.	05661	5	FTG, STR, 3/8" F/MPT Swivel, .031 Orifice
8.	05195	1	FTG, STR, .563 M Tube x 3/8" MPT
9.	05829	2	FTG, Elbow, .563M TU x .563M Tu O-Ring
10.	05190	1	1/4" x 48" Hyd. Hose with 3/8" Female JIC ends
11.	05194	1	3/8" Male Tube - 1/4" Male Pipe Thread (90)
12.	05600-30	1	Height Adjust Hydraulic Cylinder
13.	00288	1	Air Vent - Hydraulic Cylinder
14.	07201	1	3-Way 12 Volt DC Electric Valve
-	5584	-	Hydraulic Cylinder Repair Kit
15.	10197-30	2	2-1/2" x 30" Hydraulic Cylinder
16.	05828	1	(1) 9/16"-18 O-Ring - (2) 3/8" FPT Swivel Elbow



CONTROL BOX PARTS BREAKDOWN

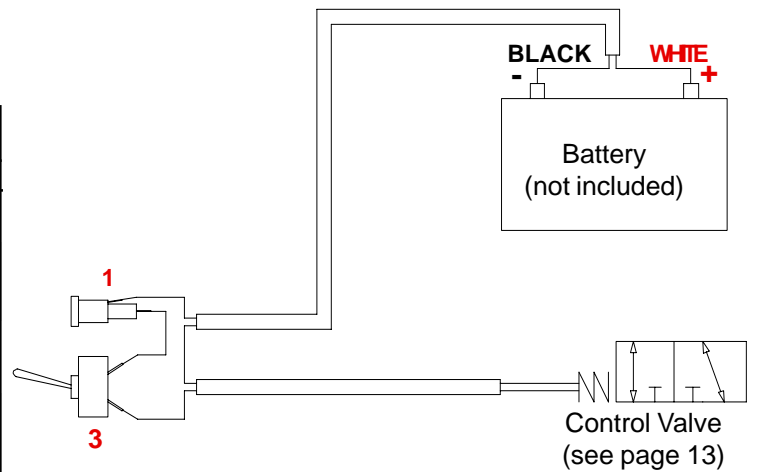


PARTS LIST

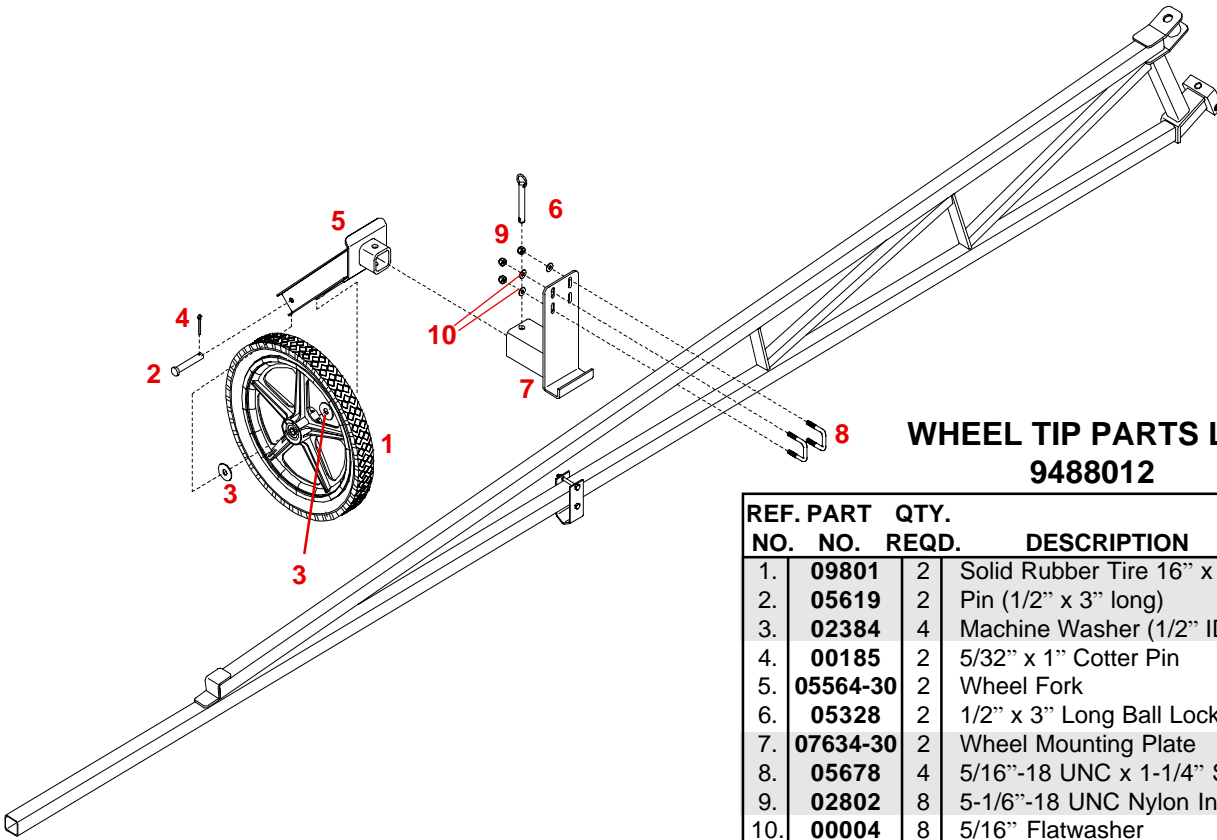
REF. NO.	PART NO.	QTY. REQD.	DESCRIPTION
-	5395	-	Control Box Assembly
1.	01019	1	Fuse Holder with Locknut
2.	05480	1	15 AMP Fuse (1-1/4" long)
3.	01013	1	Switch with Locknuts
4.	05466	1	Control Box (includes Box, Face & Screws)
-	AB21008	1	Hydraulic Fold Boom Decal
5.	02205	2	#10-24 UNC Nylon Insert Locknut
6.	05491	2	Nylon Clamp #4
7.	05000	1	2 Pin Female Plug with Boot
8.	05492-95	1	Control Box Mounting Plate
9.	00568	2	#10-24 UNC x 1/2" long Machine Screw
10.	05851	1	2 Wire x 20' Extension Cable w/Plug Ends
*	01076	2	1/4"-20 UNC x 3/4" long Machine Screw
*	02772	2	1/4"-20 UNC Nylon Insert Locknut

* Used to mount control box to the tractor

Please order replacement parts by PART NO. and DESCRIPTION.



WHEEL TIP PROTECTOR



WHEEL TIP PARTS LIST 9488012

REF. NO.	PART NO.	QTY. REQD.	DESCRIPTION
1.	09801	2	Solid Rubber Tire 16" x 1.75"
2.	05619	2	Pin (1/2" x 3" long)
3.	02384	4	Machine Washer (1/2" ID x 14 GA.)
4.	00185	2	5/32" x 1" Cotter Pin
5.	05564-30	2	Wheel Fork
6.	05328	2	1/2" x 3" Long Ball Lock Hitch Pin
7.	07634-30	2	Wheel Mounting Plate
8.	05678	4	5/16"-18 UNC x 1-1/4" Square U-Bolt
9.	02802	8	5-1/6"-18 UNC Nylon Insert Locknut
10.	00004	8	5/16" Flatwasher

Please order replacement parts by PART NO. and DESCRIPTION.

NOTE: Wheels must be mounted on opposite sides (front & rear) of boom to prevent interference during folding.

TIP PLACEMENT

1. **Marking location of boom clamps:** Mark the clamp locations by starting at the center of the center boom section. From this mark, locate 20 inch spaces to both ends of the boom.

2. **Fasten preassembled boom lines:** Fasten the boom clamps on the boom using a stainless steel gear clamp.

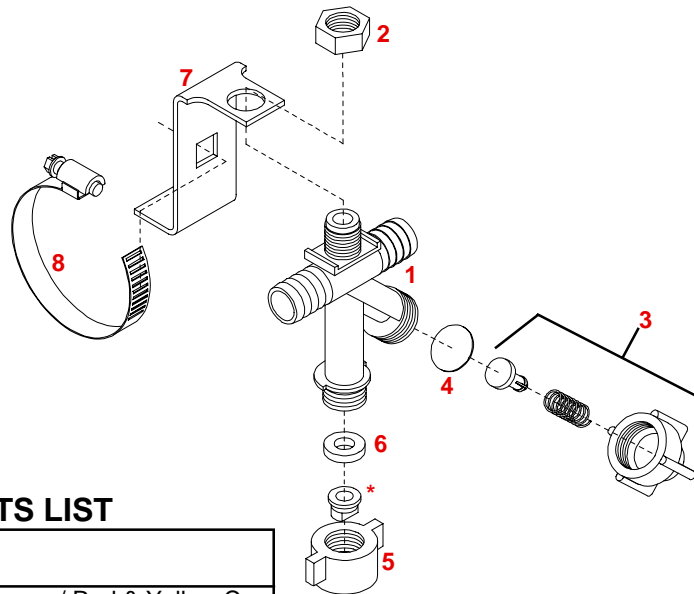
NOTE: The 60 foot uses 37 spraying tips.
The 50 foot uses 31 spraying tips.
The 45 foot uses 27 spraying tips.

BASIC PLUMBING PARTS LIST

REF. NO.	PART NO.	DESCRIPTION
-	340RB	3/4" Rubber Hose
-	B12H	3/4" Gear Clamp
-	NHT11	Nylon Hose Ties

Please order replacement parts by PART NO. and DESCRIPTION.

DRIP FREE NOZZLES AND BOOM CLAMPS

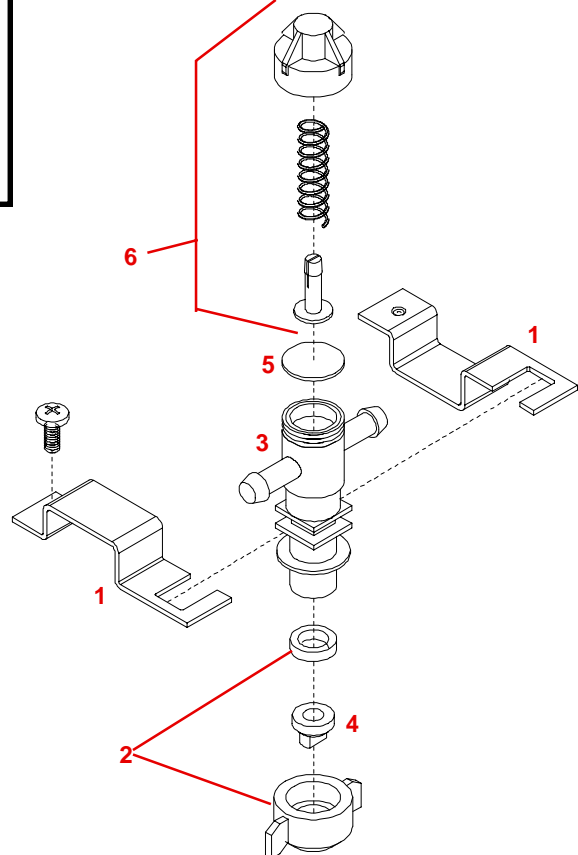


3/4" NOZZLE PARTS LIST

REF. NO.	PART NO.	DESCRIPTION
-	DF34NTL	3/4" Nozzle Elbow Assy. w/ Red & Yellow Cap
-	DF34NTT	3/4" Nozzle Tee Assy. w/ Red & Yellow Cap
1.	DF34T	3/4" Nozzle Tee
-	DF34E	3/4" Nozzle Elbow
2.	DFB12	Nut
3.	DFCP	Spring Retainer Cap Assembly
4.	DFDV	Diaphragm (viton)
5.	DFFD	Floodjet Cap (red)
-	DFFT	Flat Cap (yellow)
6.	DFGE	Gasket (EPDM)
*	-----	Tip (specify tip size) (not included)
7.	07627	Nozzle Mounting Bracket
8.	B20H	Stainless Steel Gear Clamp

Please order replacement parts by PART NO. and DESCRIPTION.

TEEJET SINGLE NOZZLES AND BOOM CLAMPS

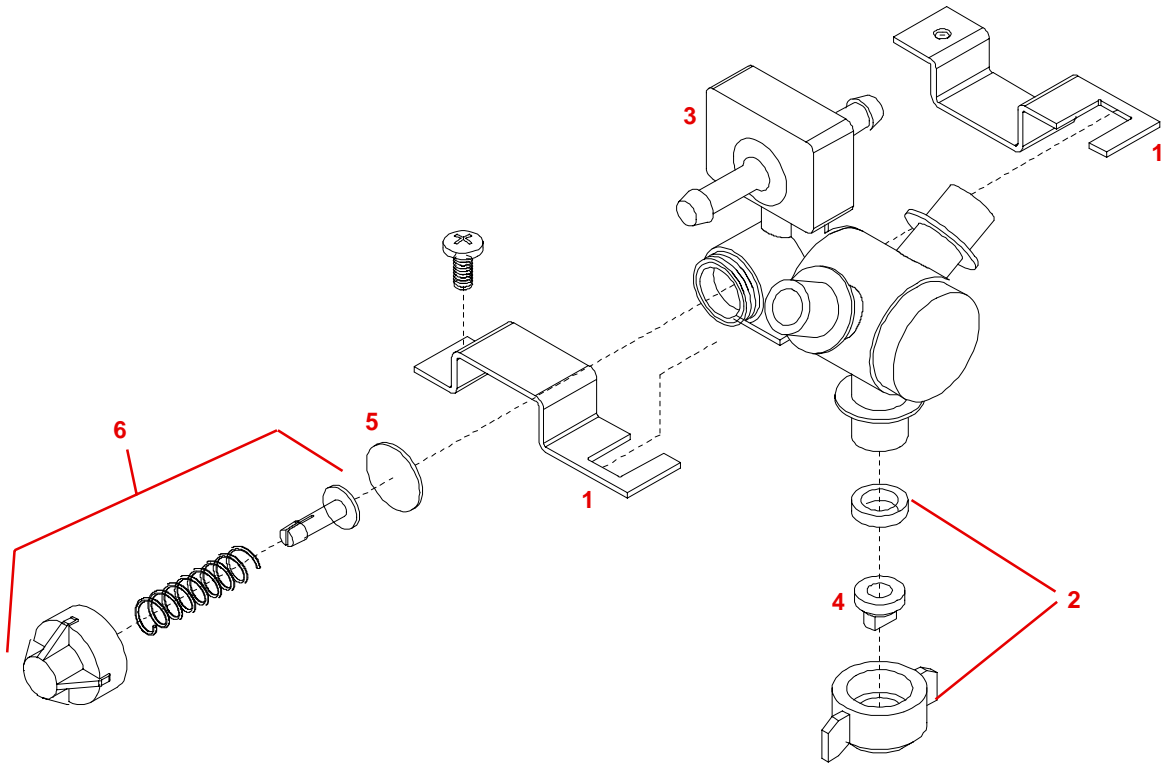


3/4" NOZZLE PARTS LIST

REF. NO.	PART NO.	DESCRIPTION
1.	07786	1-1/2" Sq. Boom Clamp (includes bolt)
2.	07787	Flat Fan Cap (includes EPDM Gasket)
3.	09147	3/4" TeeJet Nozzle Elbow
-	09148	3/4" TeeJet Nozzle Tee
4.	-----	Tip (specify tip size) (not included)
5.	21953VI	Diaphragm (viton)
6.	21950 10PP	End Cap Assembly

Please order replacement parts by PART NO. and DESCRIPTION.

TEEJET 3-WAY NOZZLES AND BOOM CLAMPS



3/4" NOZZLE PARTS LIST

REF. NO.	PART NO.	DESCRIPTION
1.	07786	1-1/2" Sq. Boom Clamp (includes bolt)
2.	07787	Flat Fan Cap Red (includes EPDM Gasket)
-	07788	Flat Fan Cap Blue (includes EPDM Gasket)
-	07789	Flat Fan Cap Brown (includes EPDM Gasket)
3.	07782	3/4" TeeJet Nozzle Elbow
-	07783	3/4" TeeJet Nozzle Tee
4.	-----	Tip (specify tip size) (not included)
5.	21953VI	Diaphragm (viton)
6.	21950 10PP	End Cap Assembly

Please order replacement parts by **PART NO.** and **DESCRIPTION.**

X-FOLD BOOM OPERATING INSTRUCTIONS.

Initial Operation:

! WARNING: To avoid personal injury or property damage, observe the following instructions. Do not attempt to operate the boom until the hydraulic lines and cylinders are completely charged with hydraulic fluid. Failure to do so may cause erratic and unpredictable boom operation that may cause personal injury and physical damage to the boom. Also if the boom is equipped with a height adjust mechanism it should be latched securely. If the height adjust uses a hydraulic cylinder it is recommended to also bleed the system before operation as described below.

It is advisable to hook the cylinders up to a proper hydraulic supply and extend and retract them several times before connecting them to the boom. It is very important to remove any air from the hydraulic system before operating.

With the boom completely unfolded and supported on ground stands or sawhorses the hydraulics may be activated to collapse the cylinders and fold the boom. Initially it may be a good idea to try to bring up both wings at the same time to make sure the ride mechanism functions correctly before operating the wings individually. Make sure to collapse the cylinders, as an attempt to extend the cylinders will force the wings down and the outer wing may contact the ground or the entire wing may be lifted off the groundstands or sawhorses. Always attempt the initial folding and unfolding slowly and carefully as an incorrectly mounted bolt or hose may cause binding or allow the entire wing to drop. Also air in the lines will cause very erratic operation.

! WARNING: To avoid personal injury or property damage, observe the following instructions. Make sure whenever operating the boom that there is no one in the line of unfolding and that there are no electric lines or tree branches that will come in contact with the boom during folding or unfolding.

When doing this the first time it would be advisable to have another person standing safely behind the sprayer to ensure that none of the hoses or cables are interfering with the boom operation and that the boom is correctly folding.

After the boom has been folded into the storage cradles the first time, stop and take a moment to make sure all hose are

routed correctly and that there are no interference problems. Examine the ride mechanism to make sure the springs are properly adjusted (see DBFT owners manual) and that there are no leaking hydraulic fittings or hoses. Make sure the cables track into the storage positions and the wings are secure in the storage positions.

To operate the boom from the folded position:

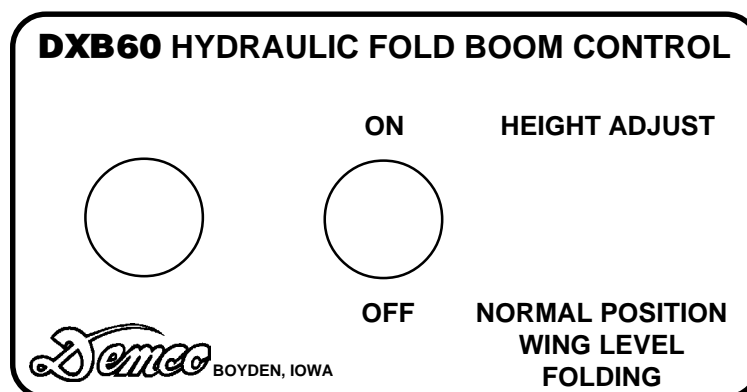
The boom is designed to be used primarily with both wings unfolded to the spraying position. Spraying with only one wing extended, could excessively twist the ride mechanism, causing damage to boom.

Activate the levers to extend the cylinders to unfold the boom. (If you have the system using only two ports on the tractor and a switch box in the cab for height adjust control, make sure this switch is in the normal (wing level/folding) position.)

! WARNING: To avoid personal injury or property damage, observe the following instructions. Always make sure the area is clear and no one will walk under the boom when it is unfolding and that there are no electric lines or tree branches that will interfere with the boom.

Unfold the wings until the boom is horizontal to the ground. The Demco boom is designed so the boom wings can be lowered below the horizontal level, if so desired, such as when spraying terraces or hilly terrain. Simply extend the cylinder further out until the boom is at the correct plane. It is always recommended to have the auto level lock pin locked out when spraying so if one wing of the boom encounters the ground it can pivot in the auto level area and not force the wing into the ground. The auto level lock pin should only be locked when folding or unfolding the boom or when spraying with only one wing extended.

Spray height should be adjusted after the boom is unfolded. After the correct height is set it is recommended that you make sure locking blocks are in their slots of the main frame. To adjust the boom height on the units with hydraulic height adjust with the switch box in the cab of the tractor, (units that use two sets of ports from the tractor) the switch in the cab must be switched on, to the height adjust position. Then actuate the corresponding hydraulic lever to raise or lower the boom to the correct position. Make sure the height adjust pins latch securely when you get to the desired spray height.



SPRAYER CALIBRATION PROCEDURES

NOTE: To avoid wind drift, use lower pressure and higher spray volume.

Guidelines For Sprayer Calibration

Calibrating the Sprayer

1. Mark off 660 feet (1/8 mile).
2. Fill the tank with water.
3. Set the sprayer to your desired operating pressure.
4. Turn the sprayer on and drive at the constant speed you will be spraying. Calibration on a road or unplowed field will give different results than on soft cultivated ground. Note tachometer reading so same speed can be maintained later.
5. Measure the amount of water it takes to refill the tank completely.
6. Calculate the amount applied:

$$\frac{\text{Number of gallons used} \times 66 \text{ (factor)}}{\text{Spray Swath in Feet}} = \frac{\text{Gallons applied}}{\text{per acre}}$$

Example: If 10 gallons are used in 660 feet and the spray swath is 40 feet, spraying rate is 16.5 gallons per acre.

$$\frac{10 \times 66}{40} = \frac{660}{40} \quad \text{or } 16.5 \text{ gallons per acre}$$

7. To calculate the amount of chemical to put in the tank:

$$\frac{\text{Sprayer Tank Size}}{\text{Desired GPA}} = \frac{\text{Acres}}{\text{Covered}} \quad \text{then;}$$

$$\frac{\text{Recommended amount of chemical per acre}}{\text{of chemical per acre}} \times \frac{\text{Acres Covered}}{\text{Covered}} = \frac{\text{Amount of chemical per tankful}}{\text{chemical per tankful}}$$

Example: If a 500 gallon tank is used and 16.5 gallons per acre are applied, one tank will cover 30.3 acres. If three pounds of chemical are required per acre, then 90 pounds of chemical are required per tankful.

$$\frac{500}{16.5} = 30.3 \text{ acres covered} \quad \text{then;}$$

$$3 \text{ lbs. (gal.)} \times 30.3 = 90 \text{ lbs. (gal.) per tankful}$$

To determine GPA at other nominal speed.

Tractor Speed	Multiply by Speed Factor
4 mph	1.25
5 mph	1.00
6 mph	.83
7.5 mph	.67
10 mph	.50

Sprayer Tips

FLAT SPRAY NOZZLE for Broadcast Spraying

Nozzle No.	Liquid Pressure in PSI	Nozzle Capacity in GPM	Gallons Per Acre Based on 20" Nozzle Spacing			
			4 MPH	5 MPH	7.5 MPH	10 MPH
XR8001VS	20	.07	5.3	4.3	2.8	2.2
	25	.08	5.9	4.7	3.1	2.4
	30	.09	6.4	5.1	3.4	2.6
	40	.10	7.4	6.0	4.0	3.0
XR80015VS	20	.11	7.8	6.3	4.3	3.2
	25	.12	8.8	7.1	4.7	3.6
	30	.13	9.7	7.7	5.2	3.9
	40	.15	11.1	8.9	6.0	4.5
XR8002VS	20	.14	10.5	8.4	5.6	4.2
	25	.16	11.8	9.4	6.3	4.7
	30	.17	12.9	10.3	6.9	5.2
	40	.20	14.8	11.8	7.9	5.9
XR8003VS	20	.21	15.7	12.6	8.4	6.3
	25	.24	17.6	14.1	9.4	7.1
	30	.26	19.0	15.4	10.3	7.7
	40	.30	22.0	17.8	11.8	8.9
XR8004VS	20	.28	21.0	16.8	11.2	8.4
	25	.32	24.0	18.7	12.5	9.4
	30	.35	26.0	21.0	13.7	10.3
	40	.40	30.0	24.0	15.8	11.9
XR8005VS	20	.35	26.0	21.0	14.0	10.5
	25	.40	29.0	23.0	15.7	11.7
	30	.43	32.0	26.0	17.2	12.9
	40	.50	37.0	30.0	19.8	14.9
XR8006VS	20	.42	31.0	25.0	16.9	12.6
	25	.47	35.0	28.0	18.7	14.1
	30	.52	39.0	31.0	21.0	15.5
	40	.60	45.0	36.0	24.0	17.8
XR8008VS	20	.56	42.0	34.0	22.0	17.0
	25	.63	47.0	37.0	25.0	19.0
	30	.69	52.0	41.0	27.0	21.0
	40	.80	59.0	48.0	32.0	24.0
8010SS	20	.70	53.0	42.0	28.0	21.0
	25	.78	59.0	47.0	31.0	24.0
	30	.86	64.0	51.0	34.0	26.0
	40	1.00	74.0	59.0	40.0	30.0

To determine GPA for solutions other than water, determine the weight per gallon or specific gravity and use the following conversion table.

Weight per Gallon	Specific Gravity	Multiply By
7.0 lbs.	.84	1.09
8.0 lbs.	.96	1.02
8.34 lbs. (water)	1.00	1.00
9.0 lbs.	1.08	.96
10.0 lbs.	1.20	.91
11.0 lbs.	1.32	.87
12.0 lbs.	1.44	.83

SPRAYER CHECKLIST:

Downtime caused by field breakdowns is costly and time consuming. Many breakdowns can be eliminated by periodic equipment maintenance. By spending time reviewing this checklist before seasonal spraying application time and following proper after-season care, you can save time and money later.



WARNING: To Prevent Serious Injury Or Death

- i Keep hands, feet, and loose clothing away from rotating parts.
- i Wear protective clothing recommended by your chemical and fertilizer manufacturer when working with chemicals.

Check Before Going To The Field :

1. NOZZLES

Check tip for excessive wear by checking for grooves in or near tip opening. Check nozzle spacing by starting at center and working outwards. Check boom for proper height.

2. HOSES

Check all hoses for worn or soft spots. Be sure all hose clamps are tightened and hoses are not kinked or pinched. Check for leakage in any lines.

3. TANK

Remove and clean agitator orifices. Check orifices for excessive wear by checking for grooves in or near orifice opening. Inspect fitting and grommets to insure they are in good condition.

4. CONTROLS

Check for leakage, plugging, or wear on all valves, fittings, etc. Clean off any build up of foreign material.

5. PUMP

Check to be sure pump turns freely.

6. FRAME

Be sure all bolts are tightened.

7. REPLACEMENT PARTS

Replace all worn or damaged parts.

After Season Care:

NOTE: It is important to wear proper safety equipment when cleaning the sprayer. See your chemical or fertilizer package for this information.

1. After spraying chemicals, run water mixed with cleaners through tank, pump and all hose hookups. If wettable powder dries out in the system, it is very difficult to put back into suspension and can cause malfunction, damage or injury.
2. When cleaned, tank should have all openings closed or covered to keep dirt from entering.
3. Pump should be flushed with soluble oil and pump ports plugged to keep out moisture and air.
4. Disassemble tips and rinse with water or cleaning solution. (Appropriate for chemical sprayed).
5. Clean tip opening with a wooden toothpick. Never use wire or hard object that could distort opening.
6. Dispose of all unused chemicals or solutions in a proper and ecologically sound manner.
7. Water rinse and dry tips before storing.

NOTE: DETHMERS MANUFACTURING COMPANY does not and will not make any recommendations concerning application of various chemicals or solutions. These recommendations relate to either amount or procedure of materials applied. If you have any questions regarding application of certain chemicals or solutions, contact your chemical supplier and follow chemical manufacturer recommendations.



DETHMERS MFG. COMPANY

P.O. BOX 189

4010 320th St., BOYDEN, IA. 51234

PH: (712) 725-2311 or (712) 725-2302

FAX: (712) 725-2380

TOLL FREE: 1-800-54DEMCO (1-800-543-3626)

www.demco-products.com